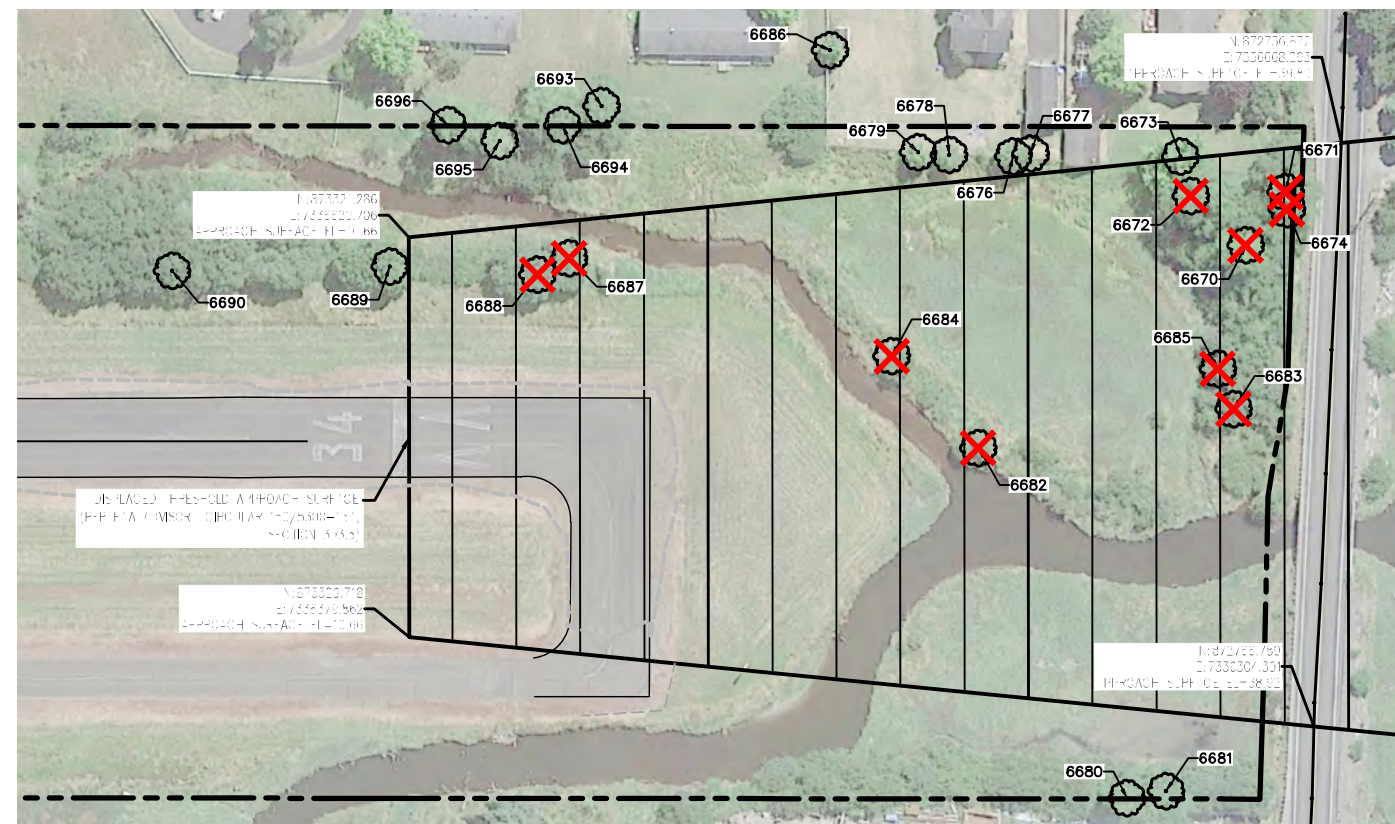


**TREE REMOVAL PLAN** 1  
 SCALE: 1"=60' C-8



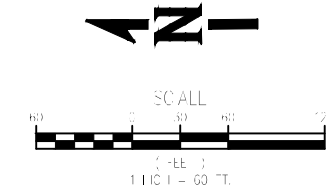
**TREE REMOVAL PLAN** 2  
 SCALE: 1"=60' C-8

**LEGEND:**

- TREE TO BE REMOVED (PAID BY EACH)
- AREA OF SCATTERED SMALL TREES. REMOVE TO 12" OFF THE GROUND (PAID BY AREA)
- PROPERTY LINE

- NOTES:**
1. FOR TREE INDICATED TO BE REMOVED, CONTRACTOR SHALL REMOVE TREES TO WITHIN 12" OF THE GROUND. NO STUMP REMOVAL ALLOWED.
  2. TREE REMOVAL SHALL BE DONE ON FOOT OR WITH LIGHT EQUIPMENT THAT WILL NOT LEAVE ANY RUTS MORE THAN ONE INCH. REMOVAL IS IN DESIGNATED WETLAND.
  3. ALL TREES AND OTHER DEBRIS SHALL BE DISPOSED OFFSITE.

Point #	Existing			13A Approach Surface		Action	
	Northing	Easting	Elevation	Surface Elevation	Penetration Value		
6621	875673.27	7336312.93	75.58	FIR	0	N/A	
6622	875811.37	7336346.37	49.46	DECID	0	N/A	
6623	875710.21	7336328.69	45.70	DECID	0	N/A	
6624	875967.23	7336363.14	66.56	DECID	0	N/A	
6625	875966.81	7336375.00	67.25	DECID	0	N/A	
6626	875982.74	7336391.12	66.58	DECID	0	N/A	
6628	875869.35	7336404.04	39.36	DECID	0	N/A	
6629	875852.35	7336430.30	32.33	DECID	33.0417	-0.72	Remove
6630	875901.85	7336448.88	42.64	DECID	35.2728	7.37	Remove
6631	875824.38	7336459.05	28.70	DECID	31.8396	-3.14	Remove
6632	875844.43	7336498.78	26.56	DECID	32.7919	-6.23	Remove
6633	875859.56	7336564.88	26.66	DECID	33.5644	-6.90	Remove
6634	875892.95	7336668.96	31.98	DECID	35.2075	-3.23	Remove
6635	875834.28	7336645.79	26.70	DECID	32.561	-5.86	Remove
6637	875847.41	7336696.42	34.21	DECID	33.2216	0.99	Remove
6638	875879.16	7336815.84	41.11	DECID	0	N/A	
6639	875765.59	7336736.40	35.43	DECID	29.6389	5.79	Remove
6640	875698.90	7336727.55	34.71	DECID	26.6571	8.05	Remove
6641	875637.56	7336703.06	36.86	DECID	23.8894	12.97	Remove
6642	875574.29	7336703.70	34.15	DECID	21.0737	13.08	Remove
6643	875401.90	7336682.77	30.72	DECID	13.3681	17.35	Remove
6644	875213.14	7336682.55	27.97	DECID	0	N/A	
6645	875017.79	7336726.79	35.41	DECID	0	N/A	
6646	875013.64	7336764.35	118.74	FIR	0	N/A	
6647	875009.67	7336784.23	116.60	FIR	0	N/A	
6648	875018.28	7336783.36	107.63	FIR	0	N/A	
6649	875034.28	7336794.31	117.98	FIR	0	N/A	
6650	875035.83	7336800.39	104.32	FIR	0	N/A	
6651	875016.43	7336832.07	116.12	FIR	0	N/A	
6652	875526.17	7336696.80	46.10	DECID	18.9214	27.18	Remove
6653	875547.79	7336699.88	44.65	DECID	19.8886	24.76	Remove
6654	875639.05	7336743.30	56.87	DECID	0	N/A	
6655	875681.63	7336760.77	58.42	DECID	0	N/A	
6656	875779.36	7336826.44	65.94	DECID	0	N/A	
6657	875825.82	7336818.77	67.61	DECID	0	N/A	
6658	875802.27	7336794.44	66.21	DECID	0	N/A	
6659	875917.27	7336837.63	81.35	DECID	0	N/A	
6660	875849.07	7336823.26	90.41	FIR	0	N/A	
6661	875836.52	7336825.10	92.48	FIR	0	N/A	
6662	875833.37	7336827.70	91.60	FIR	0	N/A	
6663	875822.43	7336827.19	88.27	FIR	0	N/A	
6664	875820.75	7336834.67	84.96	FIR	0	N/A	
6665	875792.52	7336801.73	86.09	FIR	0	N/A	
6666	875760.52	7336822.57	65.38	FIR	0	N/A	
6667	875716.14	7336804.03	66.52	FIR	0	N/A	
6670	872798.94	7336606.54	64.02	DECID	36.8014	27.22	Remove
6671	872772.80	7336638.87	62.64	DECID	38.0533	24.59	Remove
6672	872832.11	7336638.40	60.72	DECID	35.09	25.63	Remove
6673	872837.75	7336663.31	55.67	DECID	0	N/A	
6674	872772.36	7336628.14	46.23	DECID	38.0934	8.13	Remove
6676	872942.19	7336667.04	37.78	DECID	0	N/A	
6677	872931.18	7336668.46	35.68	DECID	0	N/A	
6678	872982.17	7336669.39	34.77	DECID	0	N/A	
6679	873001.51	7336671.71	36.39	DECID	0	N/A	
6680	872885.24	7336263.80	61.04	DECID	0	N/A	
6681	872860.63	7336267.27	55.90	DECID	0	N/A	
6682	872970.32	7336485.64	19.69	DECID	28.4412	-8.75	Remove
6683	872810.07	7336504.42	28.11	DECID	36.4174	-8.30	Remove
6684	873022.44	7336544.97	24.50	DECID	25.7366	-1.24	Remove
6685	872818.97	7336529.85	27.64	DECID	35.93	-8.29	Remove
6686	873054.26	7336737.40	34.24	DECID	0	N/A	
6687	873221.74	7336613.13	32.55	DECID	15.6624	16.88	Remove
6688	873241.88	7336603.60	34.82	DECID	14.672	20.15	Remove
6689	873333.86	7336611.84	40.15	DECID	0	N/A	
6690	873469.89	7336613.92	35.64	DECID	0	N/A	
6691	873715.74	7336624.69	32.40	DECID	0	N/A	
6693	873198.12	7336707.48	45.19	DECID	0	N/A	
6694	873222.98	7336696.37	59.26	DECID	0	N/A	
6695	873262.50	7336687.85	66.17	DECID	0	N/A	
6696	873294.51	7336698.95	66.32	DECID	0	N/A	
6793	874748.01	7336331.47	11.65	24" FIR	0	N/A	



# WHPacific

8755 SW Barnes Rd., Suite 300  
 Portland, OR 97225  
 503-526-0446 Fax: 503-526-0775  
 www.whpacific.com

---

REGISTERED PROFESSIONAL ENGINEER  
 STATE OF OREGON  
**PRELIMINARY**  
 DE REG. W.  
 2/17/2015

---

REVISIONS	NO.	BY	DATE	REMARKS

SHEET INFO	DESIGNED	DRAWN	CHECKED	APPROVED	LAST EDIT	PLOT DATE	SUBMITTAL
					6/11/2015	6/18/2015	

---

## TREE REMOVAL PLAN

SEASIDE MUNICIPAL AIRPORT  
2015 RUNWAY LIGHTING AND OTHER IMPROVEMENTS

PROJECT NUMBER 0005537W  
DRAWING FILE NAME 0005537W-AIRP-TR01

SCALE

1"=60'

---

SHEET NUMBER

C-8

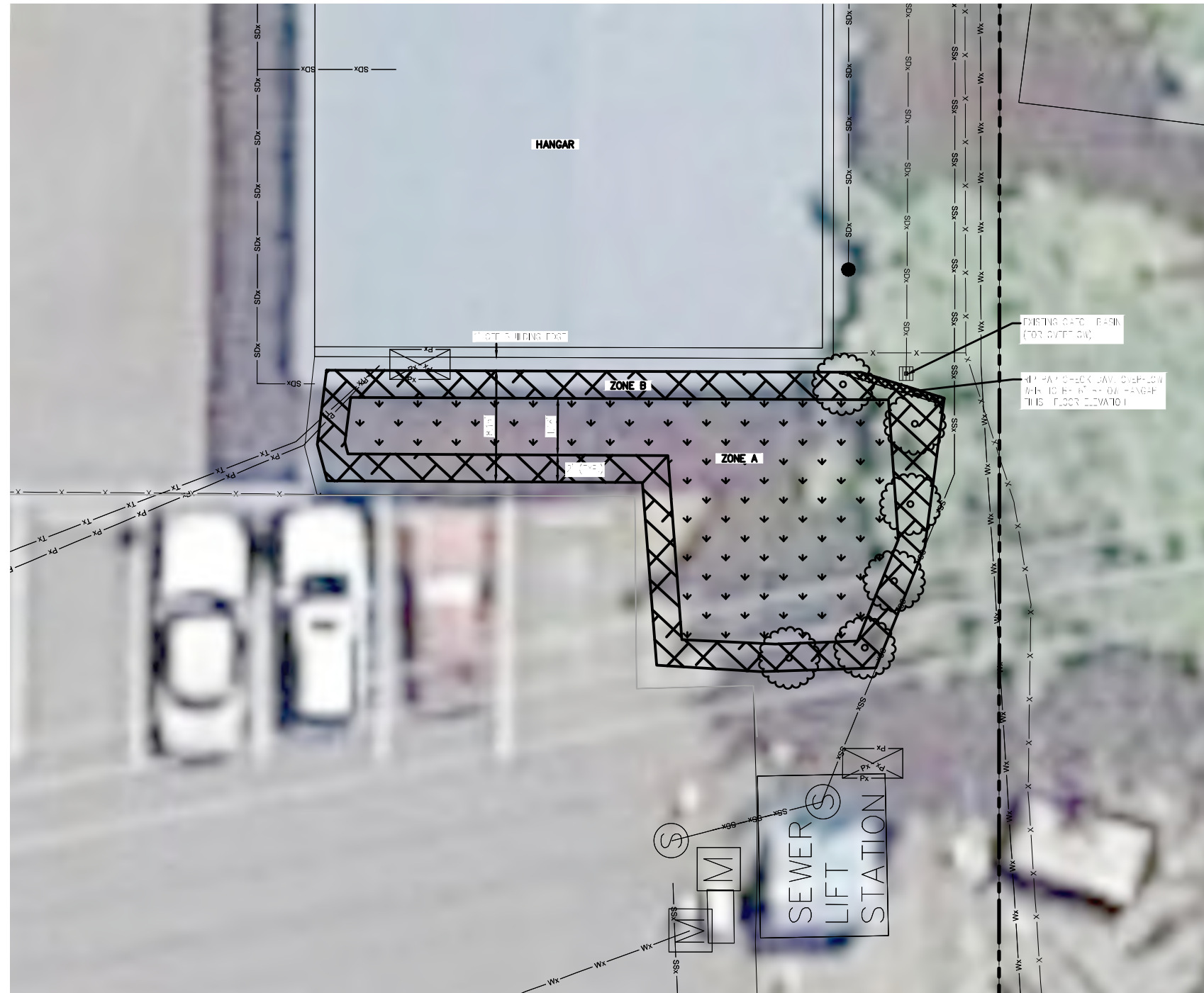
8 of 19

PRELIMINARY



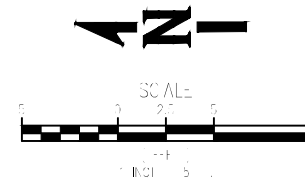


[DATE: 6/18/2015 1:44 PM ] [AUTHOR: telbert ] [PLOTTER: DWG To PDF.pc3 ] [STYLE: WHP-Standard.ctb ] [PATH: P:\City of Seaside\0005537W\Design\Drawings\Civil\0005537W-AIRP-PL01.dwg ] [LAYOUT: L-1 WATER QUALITY SWALE PLAN ]



WATER QUALITY SWALE PLAN  
SCALE: 1"=5'

1  
C-8



**GENERAL NOTES:**

1. CONTRACTOR IS TO BE AWARE THAT THE SOILS ENCOUNTERED IN THIS PROJECT MAY BE GRAVELLY AND CONTAIN COBBLES.
2. ALL EXCESS EXCAVATED MATERIAL SHALL BE HAULED AND DISPOSED OF OFF SITE. DISPOSAL INCIDENTAL TO UNCLASSIFIED EXCAVATION.
3. SEE SHEET L-2 FOR PLANTING DETAILS.

**LEGEND:**

- SSx ——— EXISTING SANITARY SEWER
- SDx ——— EXISTING STORM SEWER
- Px — Px — EXISTING POWER
- Tx — Tx — EXISTING TELEPHONE
- Wx — Wx — EXISTING WATERLINE
- X — X — EXISTING FENCE

- ZONE A: WETLAND GRASSES. SEE PLANT MATERIAL LIST, SHEET L-2
- ZONE B: GROUND COVER. SEE PLANT MATERIAL LIST, SHEET L-2
- SHRUBS. SEE SHEET L-2



REVISIONS		NO.	BY	DATE	REMARKS

SHEET INFO	
DESIGNED	—
DRAWN	—
CHECKED	—
APPROVED	—
LAST EDIT	6/11/2015
PLOT DATE	6/18/2015
SUBMITTAL	—

WATER QUALITY SWALE PLAN  
 SEASIDE MUNICIPAL AIRPORT  
 2015 RUNWAY LIGHTING AND OTHER IMPROVEMENTS  
 PROJECT NUMBER 0005537W  
 DRAWING FILE NAME 0005537W-AIRP-PL01  
 SCALE 1"=5'

SHEET NUMBER  
**L-1**  
 9 of 19

PRELIMINARY

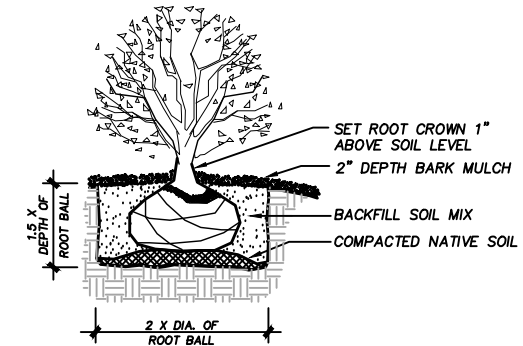


**WATER QUALITY SWALE - PLANT MATERIALS LIST**

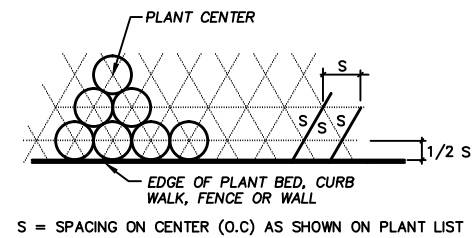
ZONE A WETLAND GRASSES	ZONE B SHRUBS	ZONE B GROUND COVER
JUNCUS PATENS	RIBES SANGUINEUM	ARCTOSTAPHYLOS UVA-URSI
SPREADING RUSH	RED-FLOWERING CURRENT	KINNICKINNICK
6" PLUG	2 GAL.	1 GAL.
ZONE A 18" O.C APPROX. SPACING (230 TOTAL)	ZONE B CONT. @ 4' O.C. SPACING AS SHOWN ON DRAWING (6 TOTAL)	ZONE B 18" O.C APPROX. SPACING (80 TOTAL)

**GENERAL NOTES**

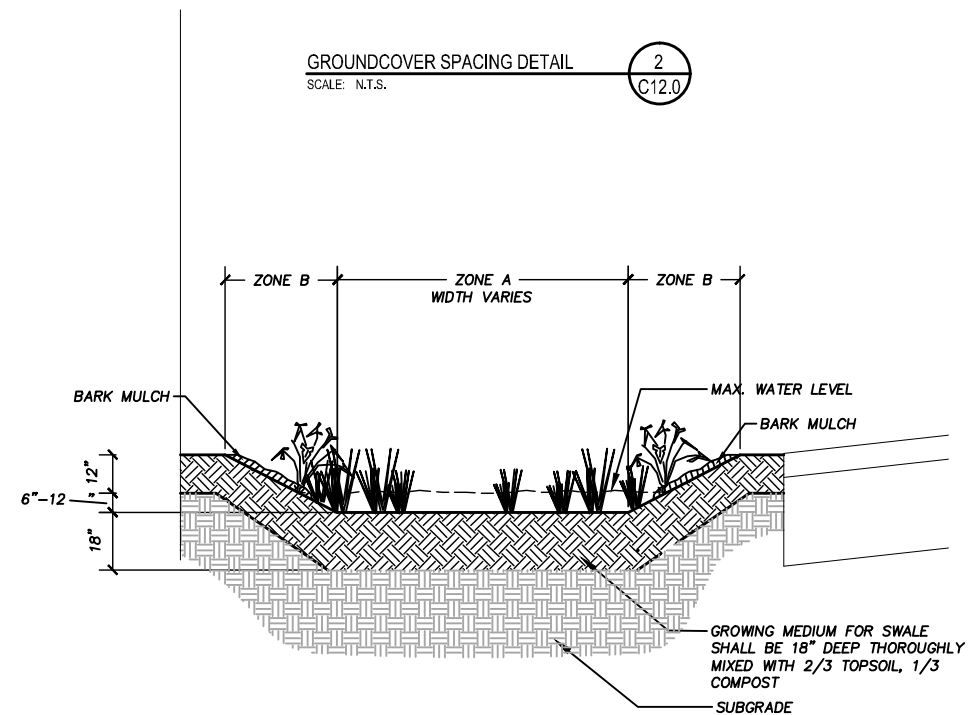
- COORDINATE WORK WITH OTHER TRADES.
- CONTRACTOR SHALL VERIFY LOCATIONS OF ALL UTILITIES PRIOR TO WORK. FIELD ADJUST FINAL TREE PLANTING LOCATIONS TO AVOID CONFLICTS.
- CONTRACTOR SHALL NOTIFY THE ENGINEER WHEN PLANTINGS HAVE BEEN INSTALLED.
- ALL PLANTS SHALL CONFORM TO AMERICAN ASSOCIATION OF NURSERYMEN GRADES AND STANDARDS PER THE 'AMERICAN STANDARD FOR NURSERY STOCK' MANUAL, CURRENT EDITION
- DO NOT WILLFULLY PLACE PLANT MATERIAL IN INAPPROPRIATE LOCATIONS. IF PLANT LOCATIONS SHOWN ON THE PLAN HAVE OBSTRUCTIONS OR LIMITATIONS IN THE FIELD, PROVIDE FIELD ADJUSTMENTS AND NOTIFY LANDSCAPE ARCHITECT OR OWNERS REPRESENTATIVE FOR APPROVAL PRIOR TO PLANTING.
- PLANT MATERIAL SHALL BE PLANTED WITHIN ONE WEEK OF DELIVERY TO SITE. DELIVERY SHOULD BE POSTPONED DURING EXTREME WEATHER CONDITIONS. ONCE DELIVERED, PROTECT ALL MATERIAL FROM EXPOSURE TO SUN, WIND, FREEZING, OR OTHER CONDITIONS THAT DECREASE THE VIGOR OF THE PLANT.
- IMPORTED TOPSOIL:**  
THE IMPORTED TOPSOIL SHALL BE A NATURAL FRIABLE SANDY LOAM SOIL AND SHALL BE REASONABLY FREE FROM TOPSOIL, CLAY LUMPS, STONE, OR SIMILAR OBJECTS LARGER THAN 1/2 INCH IN GREATEST DIAMETER, BRUSH, STUMPS, ROOTS, OBJECTIONABLE WEEDS OR LITTER, GROWTH OR A HINDRANCE TO SUBSEQUENT SMOOTH GRADING, AND MAINTENANCE OPERATIONS.
- COMPOST:**  
COMPOST SHALL BE A COMMERCIALLY MANUFACTURED MATERIAL, MEDIUM GRIND, MADE FROM DEAD PLANT MATERIAL SUCH AS GRASS CLIPPINGS, WEEDS, GREEN AND DEAD DRY LEAVES, GARDEN AND VEGETABLE MATERIAL, AND GROUND BRANCHES OF TREES AND SHRUBS; ANIMAL WASTE IS NOT ALLOWED. FURNISH A PRODUCT THAT IS COMPOSTED UNDER CONTROLLED AEROBIC DECOMPOSITION, WITH THE INTERNAL TEMPERATURE REACHING 57 DEGREES CELSIUS (135 DEGREES F) FOR 15 DAYS, WITHOUT EXCEEDING 68 DEGREES CELSIUS (155 DEGREES F). ENSURE THAT IT CONTAINS LESS THAN 10% BACTERIA AND LESS THAN 10% FUNGUS, IS A MATURE COMPOST, AND DOES NOT CONTAIN DETRIMENTAL COMPONENTS. IF IT CONTAINS MORE THAN 10% BACTERIA AND/OR FUNGUS, IT IS LIKELY NOT MATURE COMPOST AND WILL NOT BE ACCEPTABLE.
- SOIL PREPARATION:**  
PRIOR TO AMMENDING SOIL, SPRAY ALL AREAS TO BE PLANTED AND MULCHED WHERE WEEDS OR GRASS ARE GROWING WITH "ROUNDUP" AT A 2% SOLUTION. ALWAYS FOLLOW WEED CONTROL CONTAINER LABEL DIRECTIONS. SPRAY WORK SHALL BE DONE BY A SPRAY APPLICATOR LICENSED IN THE STATE. DO NOT DO ANY WORK IN THE AREAS SPRAYED FOR A MINIMUM OF 7 DAYS AFTER SPRAYING. SPRAYING SHALL BE INCIDENTAL TO PLANTING AND MULCHING.  
  
TOPSOIL TO BE PLACED IN THE WATER QUALITY SWALE AT A DEPTH OF 18". NO ADDITIONAL TOPSOIL IS REQUIRED FOR OTHER PLANTING AREAS. APPLY AS NEEDED IF POOR SOIL CONDITIONS EXIST. AMMEND ALL PLANTING AREAS BY INCOORPORATING 2 INCHES OF COMPOST INTO THE TOP 6" OF TOPSOIL. FULLY INCOORPORATE BY DISCING, TILING, HAND SPADING, OR OTHER METHODS TO A MINIMUM DEPTH OF 6". INCOORPORATE GRANULAR YPSUM AT A RATE OF 100 POUNDS PER 1,000 SQUARE FEET INTO THE TOPSOIL.
- BARK MULCH:**  
COMMERCIAL PRODUCT, MEDIUM GROUND BARK MULCH. BARK SHALL BE GROUND FIR OR HEMLOCK BARK OF UNIFORM COLOR, FREE FROM WEEDS, SEED, SANDUST, AND SPLINTERS AND SHALL NOT CONTAIN RESIN, TANNIN, WOOD FIBER OR OTHER COMPOUNDS DETRIMENTAL TO PLANT LIFE. SOURCE SHALL BE FROM FRESHWATER MILL. SPREAD BARK MULCH AT A DEPTH OF 2.5" IN ALL PLANTING AREAS AND OTHER AREAS INDICATED ON THE PLANS. DO NOT SPREAD BARK MULCH BELOW THE MAX WATER LEVEL IN THE WATER QUALITY SWALES.



SHRUB PLANTING DETAIL  
SCALE: N.T.S. (1) C12.0



GROUNDCOVER SPACING DETAIL  
SCALE: N.T.S. (2) C12.0



WATER QUALITY SWALE SECTION  
SCALE: N.T.S. (3) C12.0

**WHPacific**  
 8755 SW Barnes Rd, Suite 300  
 Portland, OR 97225  
 503-526-0446 Fax: 503-526-0775  
 www.whpacific.com

REGISTERED PROFESSIONAL ENGINEER  
 PRELIMINARY  
 DECEMBER 2, 2015  
 DATE: 6/18/2015

REVISIONS	NO.	BY	DATE	REMARKS

SHEET INFO	DESIGNED	DRAWN	CHECKED	APPROVED	LAST EDIT	PLOT DATE	SUBMITTAL
					6/11/2015	6/18/2015	

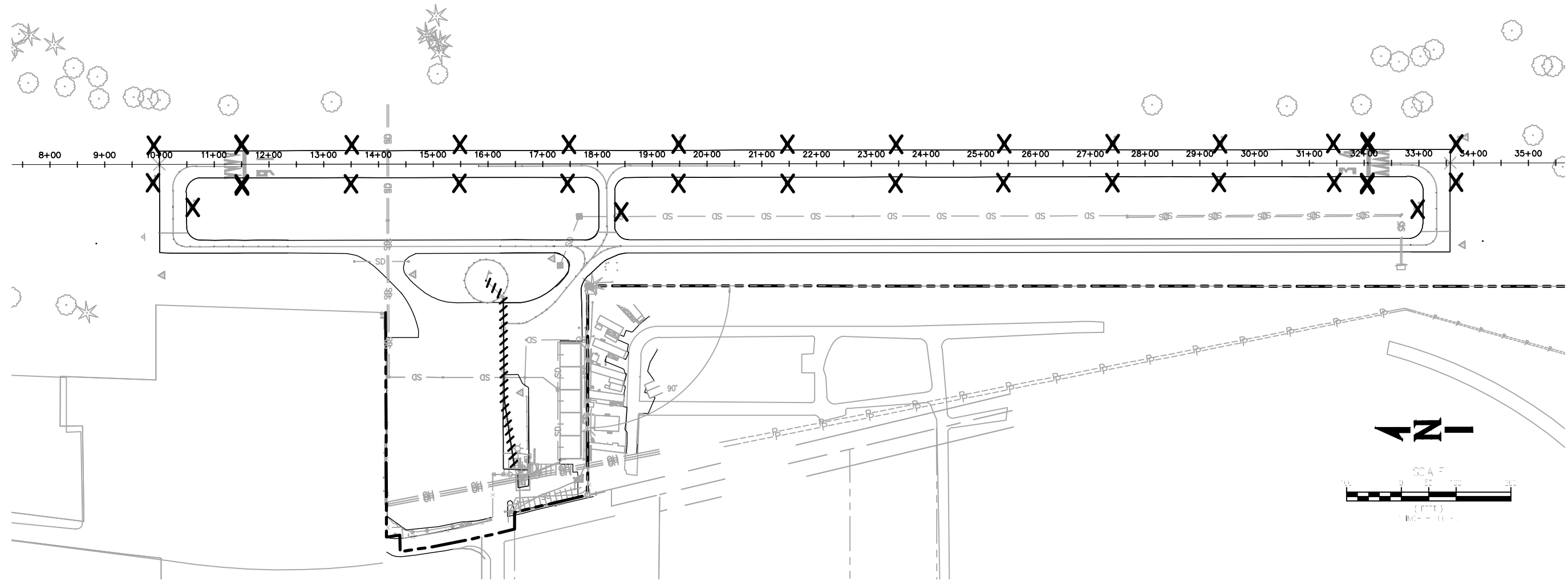
**SWALE PLANTING DETAILS**  
 SEASIDE MUNICIPAL AIRPORT  
 2015 RUNWAY LIGHTING AND OTHER IMPROVEMENTS  
 PROJECT NUMBER: 0005537W  
 DRAWING FILE NAME: 0005537W-AIRP-PL01  
 SCALE: N.T.S.

PRELIMINARY

DATE: 6/18/2015 1:44 PM [ AUTHOR: rebert ] [ PLOTTER: DWG To PDF.pc3 ] [ STYLE: WHP-Standard.ctb ] [ PATH: P:\City of Seaside\0005537W\Design\Drawings\Civil\0005537W-AIRP-PL01.dwg ] [ LAYOUT: L-2 SWALE PLANTING DETAILS ]



[DATE: 6/18/2015 1:45 PM] [AUTHOR: telbert] [PLOTTER: DWG To PDF.pc3] [STYLE: WHP-Standard.ctb] [LAYOUT: E-1 ELECTRICAL DEMOLITION PLAN]  
 [PATH: P:\City of Seaside\0005537W\Design\Drawings\Civil\0005537W-AIRP-EL00.dwg]



ELECTRICAL DEMOLITION PLAN  
 SCALE: 1"=100'

1  
 E-1

**LEGEND:**

- X** EXISTING LIGHT TO BE REMOVED BY CONTRACTOR AND DISPOSED OF OFF-SITE
- ////** REMOVE AND DISPOSE OF EXISTING CONDUCTORS IN EXISTING CONDUITS TO REMAIN.

**GENERAL NOTES:**

1. EXISTING CIRCUIT IS DIRECT BURIED CONDUCTORS. ABANDON IN PLACE AND ADJUST AS NEEDED FOR NEW CONDUITS.



**WHPacific**  
 6755 SW Barnes Rd., Suite 300  
 Portland, OR 97225  
 503-526-0446 Fax: 503-526-0775  
 www.whpacific.com

REVISIONS	NO.	BY	DATE	REMARKS

SHEET INFO	
DESIGNED	—
DRAWN	—
CHECKED	—
APPROVED	—
LAST EDIT	6/12/2015
PLOT DATE	6/18/2015
SUBMITTAL	—

**ELECTRICAL DEMOLITION PLAN**  
 SEASIDE MUNICIPAL AIRPORT  
 2015 RUNWAY LIGHTING AND OTHER IMPROVEMENTS  
 PROJECT NUMBER: 0005537W  
 DRAWING FILE NAME: 0005537W-AIRP-EL00  
 SCALE: 1"=100'

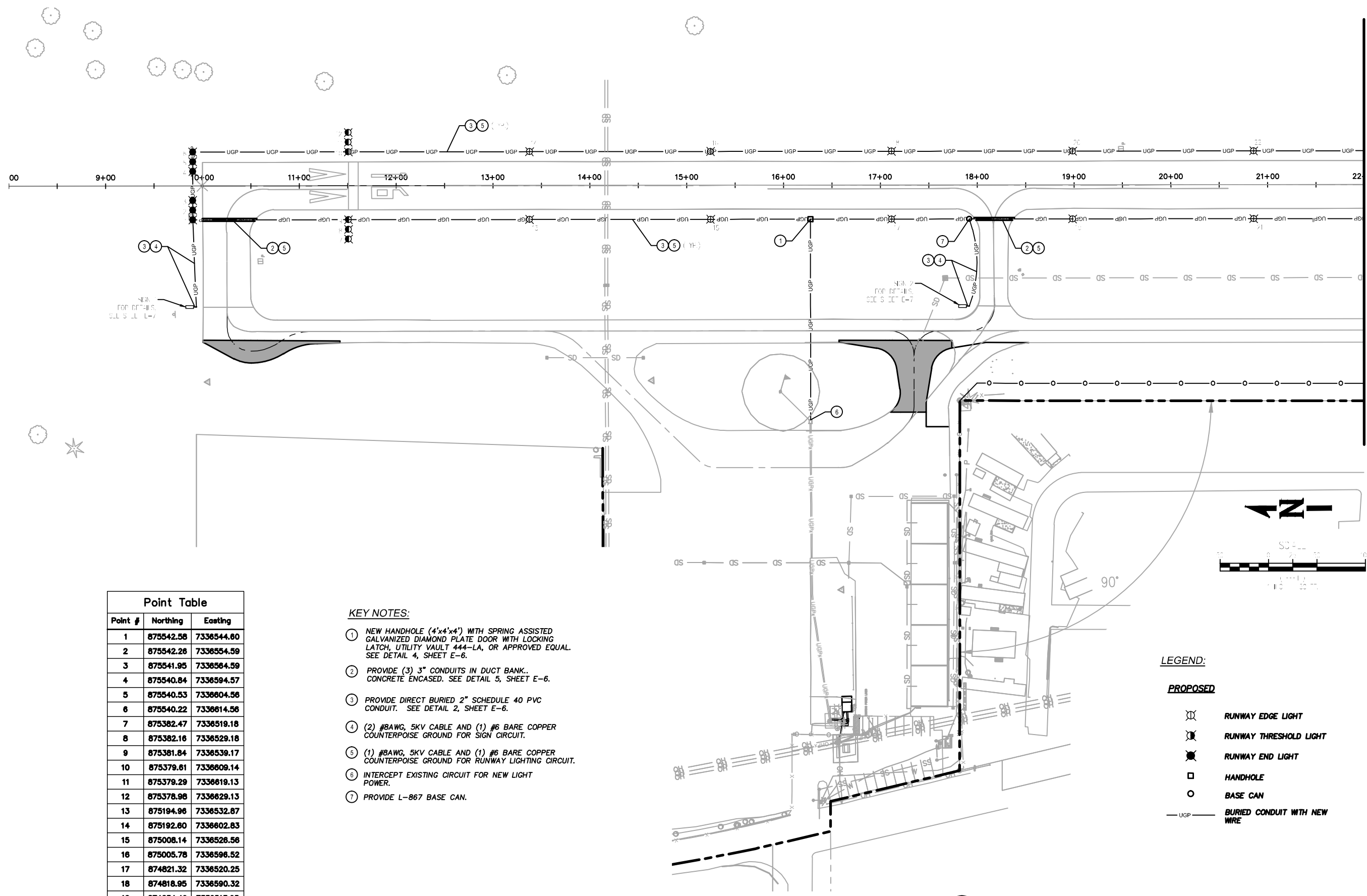
SHEET NUMBER  
**E-1**  
 11 of 19

PRELIMINARY





[DATE: 6/18/2015 1:45 PM] [AUTHOR: rebert] [PLOTTER: DWG To PDF.pc3] [STYLE: WHP-Standard.ctb] [LAYOUT: E-2 RUNWAY LIGHTING PLAN]  
 [PATH: P:\City of Seaside\0005537W\Design\Drawings\Civil\0005537W-AIRP-EL01.dwg]



Point #	Northing	Easting
1	875542.58	7336544.60
2	875542.26	7336554.59
3	875541.95	7336564.59
4	875540.84	7336594.57
5	875540.53	7336604.56
6	875540.22	7336614.56
7	875382.47	7336519.18
8	875382.16	7336529.18
9	875381.84	7336539.17
10	875379.61	7336609.14
11	875379.29	7336619.13
12	875378.98	7336629.13
13	875194.96	7336532.87
14	875192.60	7336602.83
15	875008.14	7336528.56
16	875005.78	7336596.52
17	874821.32	7336520.25
18	874818.95	7336590.32
19	874634.49	7336513.95
20	874632.13	7336583.91
21	874447.67	7336507.64
22	874445.31	7336577.60

**KEY NOTES:**

- ① NEW HANDHOLE (4'x4'x4') WITH SPRING ASSISTED GALVANIZED DIAMOND PLATE DOOR WITH LOCKING LATCH, UTILITY VAULT 444-LA, OR APPROVED EQUAL. SEE DETAIL 4, SHEET E-6.
- ② PROVIDE (3) 3" CONDUITS IN DUCT BANK.. CONCRETE ENCASED. SEE DETAIL 5, SHEET E-6.
- ③ PROVIDE DIRECT BURIED 2" SCHEDULE 40 PVC CONDUIT. SEE DETAIL 2, SHEET E-6.
- ④ (2) #8AWG, 5KV CABLE AND (1) #6 BARE COPPER COUNTERPOISE GROUND FOR SIGN CIRCUIT.
- ⑤ (1) #8AWG, 5KV CABLE AND (1) #6 BARE COPPER COUNTERPOISE GROUND FOR RUNWAY LIGHTING CIRCUIT.
- ⑥ INTERCEPT EXISTING CIRCUIT FOR NEW LIGHT POWER.
- ⑦ PROVIDE L-867 BASE CAN.

**LEGEND:**

**PROPOSED**

- ⊗ RUNWAY EDGE LIGHT
- ⊗ RUNWAY THRESHOLD LIGHT
- ⊗ RUNWAY END LIGHT
- HANDHOLE
- BASE CAN
- UGP BURIED CONDUIT WITH NEW WIRE

RUNWAY LIGHTING PLAN (1 OF 2)  
 SCALE: 1"=50'

MATCHLINE SEE SHEET E-3



**WHPacific**  
 8755 SW Barnes Rd., Suite 300  
 Portland, OR 97225  
 503-526-0448 Fax: 503-526-0775  
 www.whpacific.com

REVISIONS	NO.	BY	DATE	REMARKS

SHEET INFO	DESIGNED	DRAWN	CHECKED	APPROVED	LAST EDIT	PLOT DATE	SUBMITTAL
					6/11/2015	6/18/2015	

**RUNWAY LIGHTING PLAN (1 OF 2)**  
 SEASIDE MUNICIPAL AIRPORT  
 2015 RUNWAY LIGHTING AND OTHER IMPROVEMENTS  
 PROJECT NUMBER: 0005537W  
 DRAWING FILE NAME: 0005537W-AIRP-EL01  
 SCALE: 1"=50'

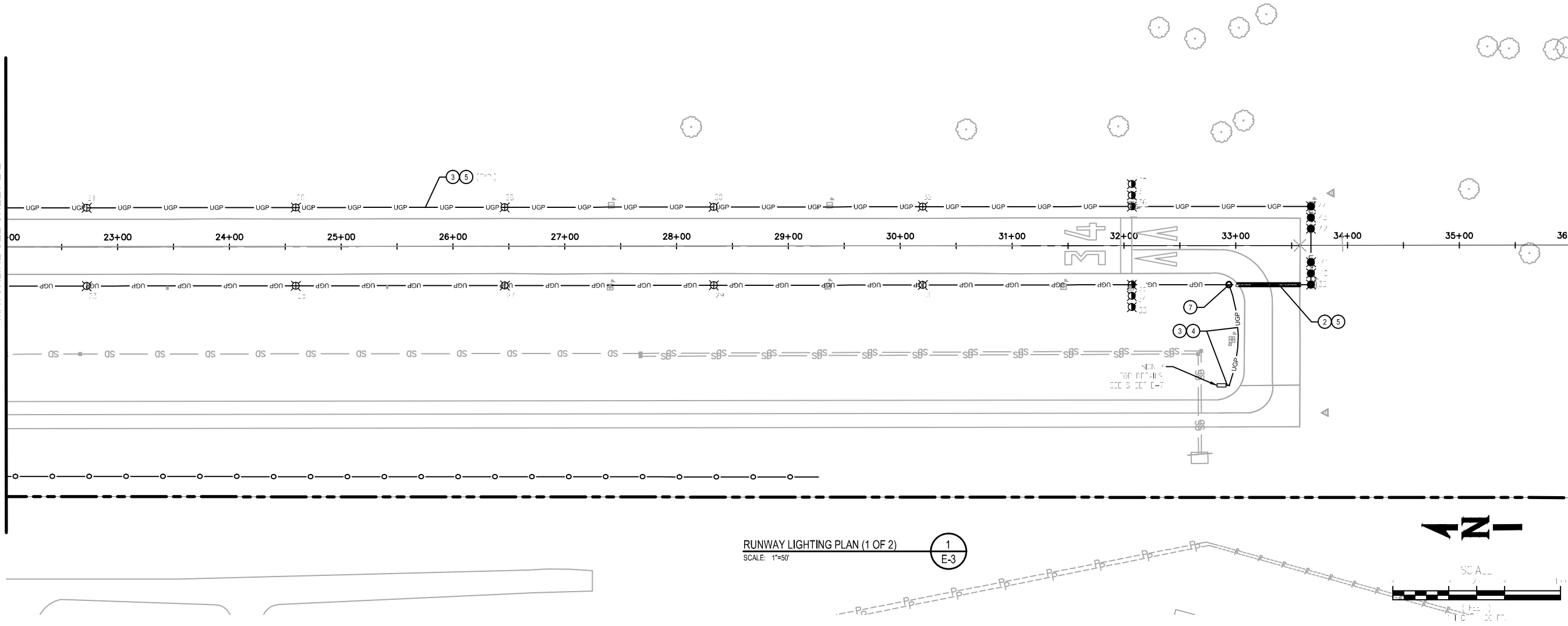
SHEET NUMBER  
**E-2**  
 12 of 19

PRELIMINARY



[DATE: 6/18/2015 1:45 PM] [AUTHOR: rlebert] [PLOTTER: DWG To PDF.pc3] [STYLE: WHP-Standard.ctb] [LAYOUT: E-3 RUNWAY LIGHTING PLAN]  
 [PATH: P:\City of Seaside\0005537W\Design\Drawings\Civil\0005537W-AIRP-EL01.dwg]

MATCHLINE SEE SHEET E-2



RUNWAY LIGHTING PLAN (1 OF 2)  
 SCALE: 1"=50'

1  
 E-3

Point #	Northing	Easting
23	874280.85	7336501.13
24	874258.48	7336571.30
25	874074.02	7336495.03
26	874071.86	7336564.99
27	873887.20	7336488.73
28	873884.84	7336558.69
29	873700.37	7336482.42
30	873698.01	7336552.38
31	873513.55	7336476.12
32	873511.19	7336548.08
33	873327.44	7336449.82
34	873327.08	7336459.82
35	873328.73	7336469.81
36	873324.28	7336539.72
37	873323.92	7336549.76
38	873323.57	7336559.76
39	873166.53	7336464.41
40	873166.18	7336474.40
41	873165.82	7336484.39
42	873164.88	7336514.38
43	873164.53	7336524.37

**LEGEND:**

**PROPOSED**

- RUNWAY EDGE LIGHT
- RUNWAY THRESHOLD LIGHT
- RUNWAY END LIGHT
- HANDHOLE
- BASE CAN
- BURIED CONDUIT WITH NEW WIRE

**KEY NOTES:**

- ① NEW HANDHOLE (4'x4'x4') WITH SPRING ASSISTED GALVANIZED DIAMOND PLATE DOOR WITH LOCKING LATCH, UTILITY VAULT 444-LA, OR APPROVED EQUAL. SEE DETAIL 4, SHEET E-6.
- ② PROVIDE (3) 3" CONDUITS IN DUCT BANK.. CONCRETE ENCASED. SEE DETAIL 5, SHEET E-6.
- ③ PROVIDE DIRECT BURIED 2" SCHEDULE 40 PVC CONDUIT. SEE DETAIL 2, SHEET E-6.
- ④ (2) #8AWG, 5KV CABLE AND (1) #6 BARE COPPER COUNTERPOISE GROUND FOR SIGN CIRCUIT.
- ⑤ (1) #8AWG, 5KV CABLE AND (1) #6 BARE COPPER COUNTERPOISE GROUND FOR RUNWAY LIGHTING CIRCUIT.
- ⑥ INTERCEPT EXISTING CIRCUIT FOR NEW LIGHT POWER.
- ⑦ PROVIDE L-867 BASE CAN.



**WHPacific**  
 8755 SW Barnes Rd., Suite 300  
 Portland, OR 97225  
 503-526-0446 Fax: 503-526-0775  
 www.whpacific.com

REVISIONS	NO.	BY	DATE	REMARKS

SHEET INFO	DESIGNED	DRAWN	CHECKED	APPROVED	LAST EDIT	PLOT DATE	SUBMITTAL
					6/11/2015	6/18/2015	

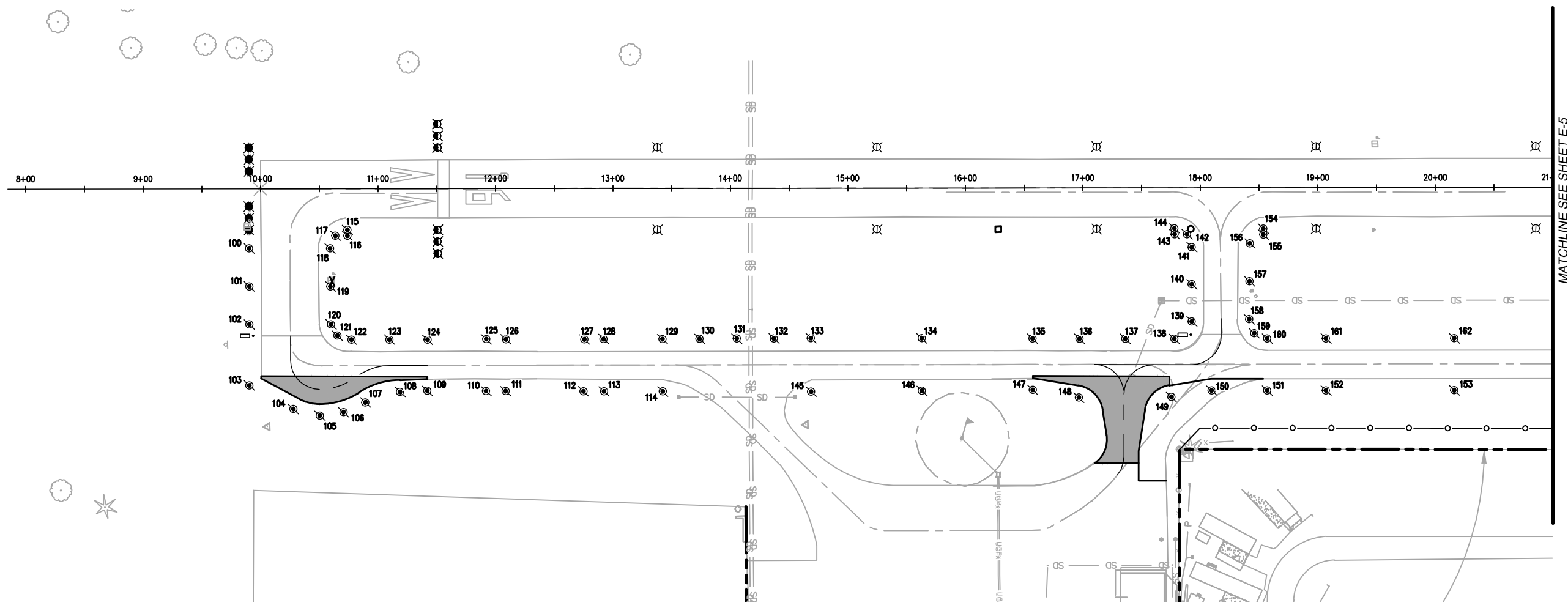
**RUNWAY LIGHTING PLAN (2 OF 2)**  
 SEASIDE MUNICIPAL AIRPORT  
 2015 RUNWAY LIGHTING AND OTHER IMPROVEMENTS  
 PROJECT NUMBER: 0005537W  
 DRAWING FILE NAME: 0005537W-AIRP-EL01  
 SCALE: 1"=50'

SHEET NUMBER  
**E-3**  
 13 of 19

PRELIMINARY



DATE: 6/18/2015 1:45 PM [AUTHOR: leibert] [PLOTTER: DWG To PDF.pc3] [STYLE: WHP-Standard.ctb] [LAYOUT: Reflectors (1)]  
 PATH: P:\City of Seaside\0005537W\Design\Drawings\Civil\0005537W-AIRP-EL05.dwg

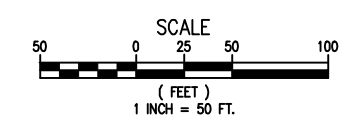


MATCHLINE SEE SHEET E-5

Point Table		
Point #	Northing	Easting
100	875542.76	7336528.85
101	875543.85	7336496.54
102	875544.94	7336464.23
103	875546.73	7336412.57
104	875509.95	7336390.94
105	875487.63	7336384.50
106	875467.30	7336366.70
107	875448.39	7336394.49
108	875418.64	7336402.45
109	875395.37	7336402.43
110	875328.86	7336400.56
111	875328.86	7336399.95
112	875282.89	7336397.46
113	875245.19	7336396.61
114	875195.22	7336394.94
115	875458.66	7336541.77
116	875458.63	7336536.77
117	875468.96	7336537.12
118	875474.02	7336526.53
119	875474.72	7336494.21
120	875475.42	7336461.89

Point Table		
Point #	Northing	Easting
121	875470.37	7336452.12
122	875458.47	7336448.24
123	875426.13	7336447.17
124	875363.80	7336445.94
125	875343.81	7336444.68
126	875327.08	7336443.97
127	875260.37	7336441.63
128	875243.93	7336441.38
129	875193.87	7336439.49
130	875182.26	7336438.60
131	875130.68	7336437.70
132	875099.08	7336436.81
133	875067.53	7336435.92
134	874973.30	7336432.44
135	874879.15	7336428.96
136	874838.18	7336427.49
137	874800.20	7336426.07
138	874758.48	7336424.55
139	874743.01	7336438.85
140	874741.95	7336470.45
141	874740.88	7336502.05

Point Table		
Point #	Northing	Easting
142	874744.52	7336513.20
143	874755.15	7336513.49
144	874754.98	7336518.48
145	875068.93	7336390.36
146	874874.65	7336367.77
147	874880.38	7336365.18
148	874841.42	7336377.36
149	874762.71	7336375.16
150	874728.18	7336379.52
151	874880.95	7336377.76
152	874830.92	7336376.09
153	874521.75	7336372.44
154	874679.40	7336515.62
155	874679.62	7336510.63
156	874691.29	7336503.50
157	874692.70	7336471.23
158	874694.11	7336438.96
159	874690.38	7336426.99
160	874679.42	7336422.00
161	874629.44	7336420.34
162	874620.27	7336416.69



- LEGEND:**
- RUNWAY EDGE LIGHT
  - RUNWAY THRESHOLD LIGHT
  - RUNWAY END LIGHT
  - TAXIWAY REFLECTOR
  - EXISTING EDGE OF PAVEMENT
  - PROPOSED EDGE OF PAVEMENT

**WHPacific**  
 8755 SW Barnes Rd., Suite 300  
 Portland, OR 97225  
 503-526-0446 Fax: 503-526-0775  
 www.whpacific.com

REGISTERED PROFESSIONAL ENGINEER  
 STATE OF OREGON  
 DE REG. NO. 12345  
 EXPIRES: 12/31/2015

---

REVISIONS

NO.	BY	DATE	REMARKS

SHEET INFO

DESIGNED	DRAWN	CHECKED	APPROVED	LAST EDIT	PLOT DATE	SUBMITTAL
				6/12/2015	6/18/2015	

---

RETROREFLECTIVE PLAN (1 OF 2)

SEASIDE MUNICIPAL AIRPORT  
 2015 RUNWAY LIGHTING AND OTHER IMPROVEMENTS

PROJECT NUMBER: 0005537W  
 DRAWING FILE NAME: 0005537W-AIRP-EL05  
 SCALE: ----

---

SHEET NUMBER

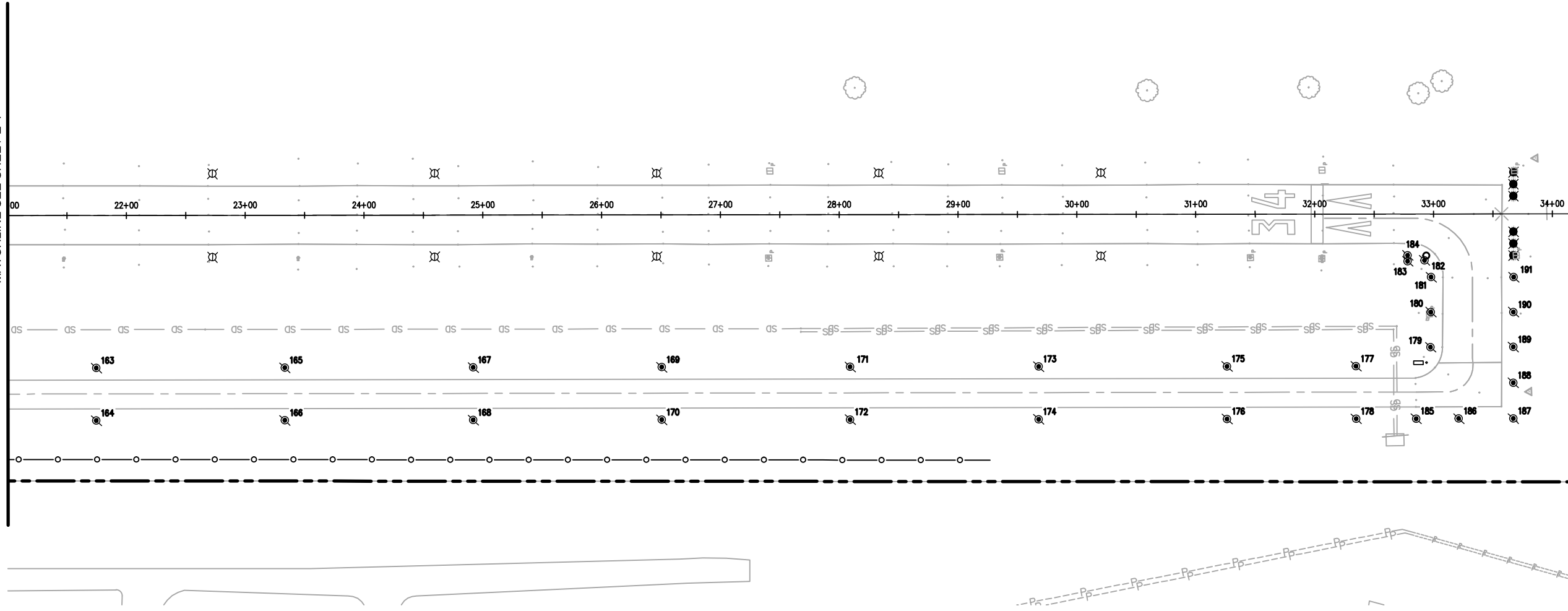
**E-4**  
14 of 19

PRELIMINARY



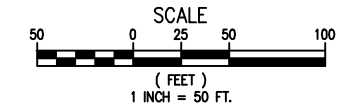
[DATE: 6/18/2015 1:45 PM] [AUTHOR: leibert] [PLOTTER: DWG To PDF.pc3] [STYLE: WHP-Standard.ctb] [LAYOUT: Reflectors (2)]  
 [PATH: P:\City of Seaside\0005537W\Design\Drawings\Civil\0005537W-AIRP-EL05.dwg]

MATCHLINE SEE SHEET E-4



Point Table		
Point #	Northing	Easting
163	874361.76	7336411.39
164	874363.24	7336367.15
165	874203.25	7336406.09
166	874204.73	7336361.85
167	874044.74	7336400.79
168	874046.22	7336356.55
169	873886.23	7336395.49
170	873867.70	7336361.26
171	873727.71	7336390.20
172	873729.19	7336345.96
173	873569.20	7336384.90
174	873570.68	7336340.67
175	873410.69	7336379.80
176	873412.17	7336335.37
177	873302.15	7336375.97
178	873303.63	7336331.74
179	873238.93	7336389.71
180	873237.65	7336419.26
181	873236.38	7336448.59
182	873241.49	7336462.94

Point Table		
Point #	Northing	Easting
183	873255.66	7336462.66
184	873255.51	7336467.85
185	873253.22	7336330.06
186	873217.33	7336328.85
187	873171.46	7336327.29
188	873170.47	7336357.40
189	873169.43	7336387.50
190	873168.16	7336416.83
191	873166.88	7336446.15



LEGEND:

- RUNWAY EDGE LIGHT
- RUNWAY THRESHOLD LIGHT
- RUNWAY END LIGHT
- TAXIWAY REFLECTOR
- EXISTING EDGE OF PAVEMENT
- PROPOSED EDGE OF PAVEMENT



**WHPacific**  
 8755 SW Barnes Rd., Suite 300  
 Portland, OR 97225  
 503-526-0446 Fax 503-526-0775  
 www.whpacific.com

SHEET INFO			
DESIGNED	DRAWN	CHECKED	APPROVED
—	—	—	—
REVISIONS			
NO.	BY	DATE	REMARKS

SHEET INFO			
DESIGNED	DRAWN	CHECKED	APPROVED
—	—	—	—
REVISIONS			
NO.	BY	DATE	REMARKS

**RETROREFLECTIVE PLAN (2 OR 2)**  
 SEASIDE MUNICIPAL AIRPORT  
 2015 RUNWAY LIGHTING AND OTHER IMPROVEMENTS  
 PROJECT NUMBER 0005537W DRAWING FILE NAME 0005537W-AIRP-EL05 SCALE ---

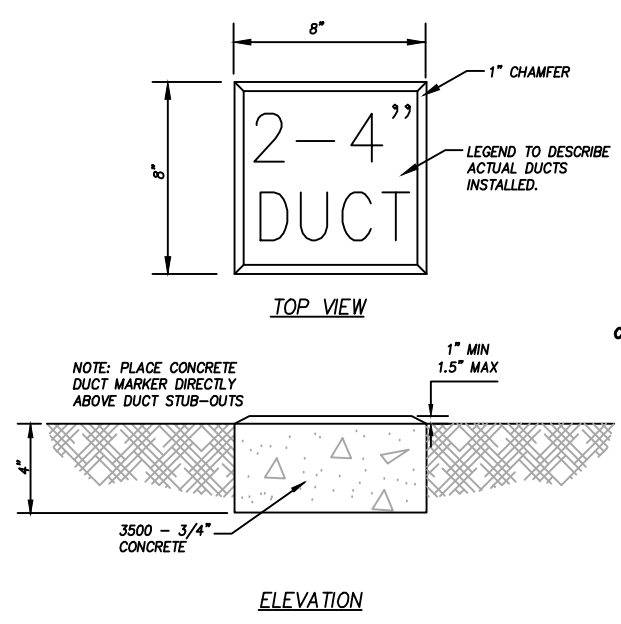
SHEET NUMBER  
**E-5**  
 15 of 19

PRELIMINARY

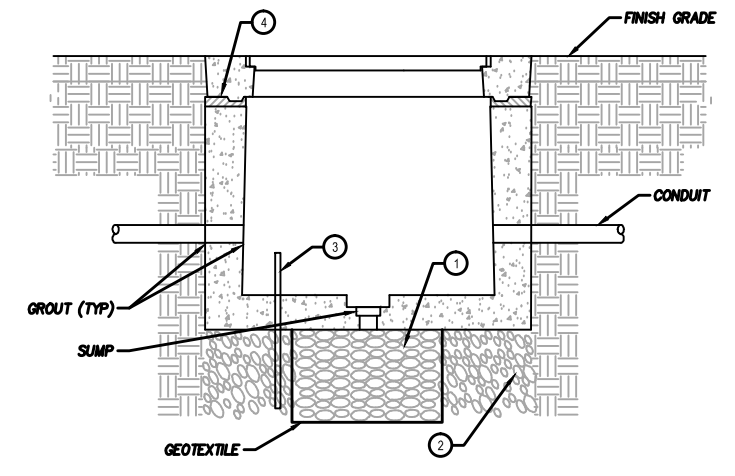
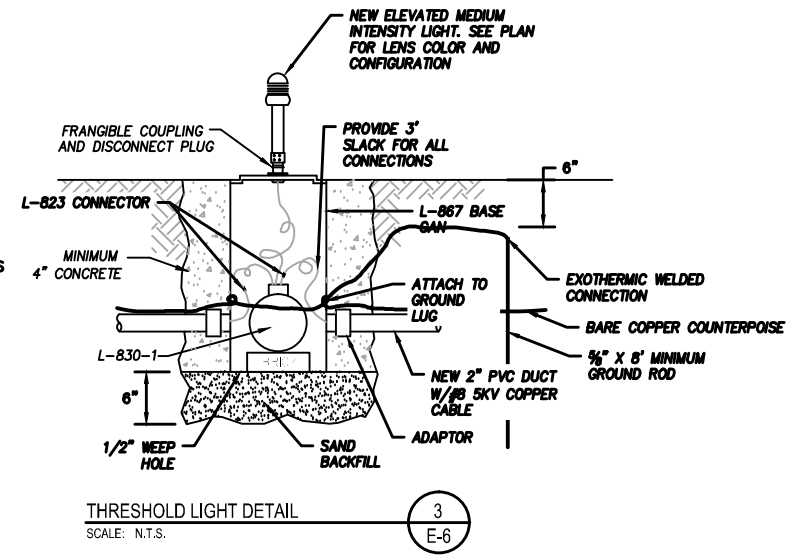
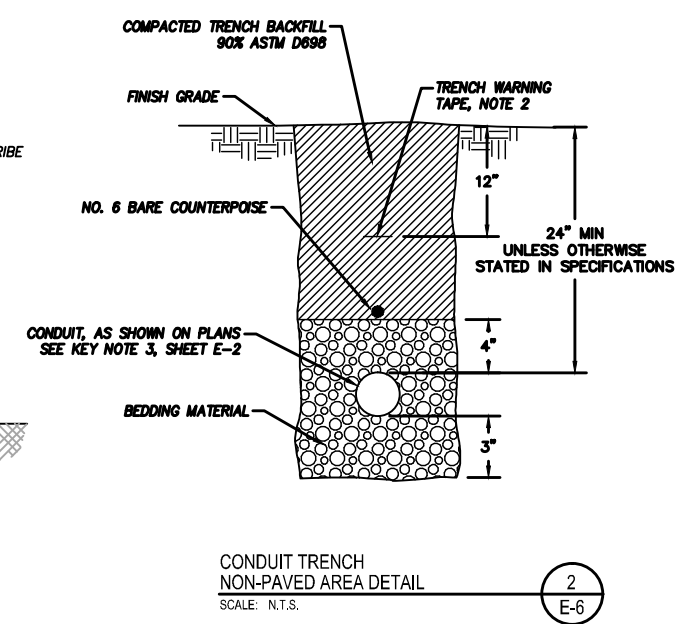




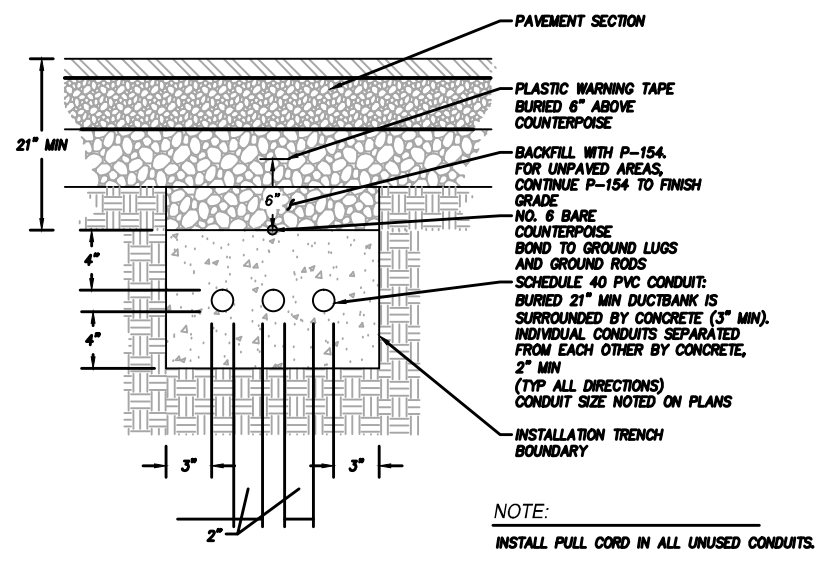
[DATE: 6/18/2015 1:46 PM] [AUTHOR: rebert] [PLOTTER: DWG To PDF.pc3] [STYLE: WHP-Standard.ctb] [PATH: P:\City of Seaside\0005537W\Design\Drawings\Civil\0005537W-AIRP-EL02.dwg] [LAYOUT: E-4 ELECTRICAL DETAILS]



**DUCT MARKER**  
SCALE: N.T.S. 1 E-6



- NOTES:**
- 1 PROVIDE 1' X 1' X 3" DEEP, 3 CF OF 1"-1-1/2" ROUND ROCK BELOW SUMP.
  - 2 PROVIDE COMPACTED 3/4" MINUS 12" DEEP MINIMUM CRUSHED ROCK.
  - 3 PROVIDE CU COATED 10 FT GROUND ROD.
  - 4 USE NON-SHRINK GROUT TO SEAL AND BOND TOP TO BASE.



**NOTE:**  
INSTALL PULL CORD IN ALL UNUSED CONDUITS.

REVISIONS	NO.	BY	DATE	REMARKS

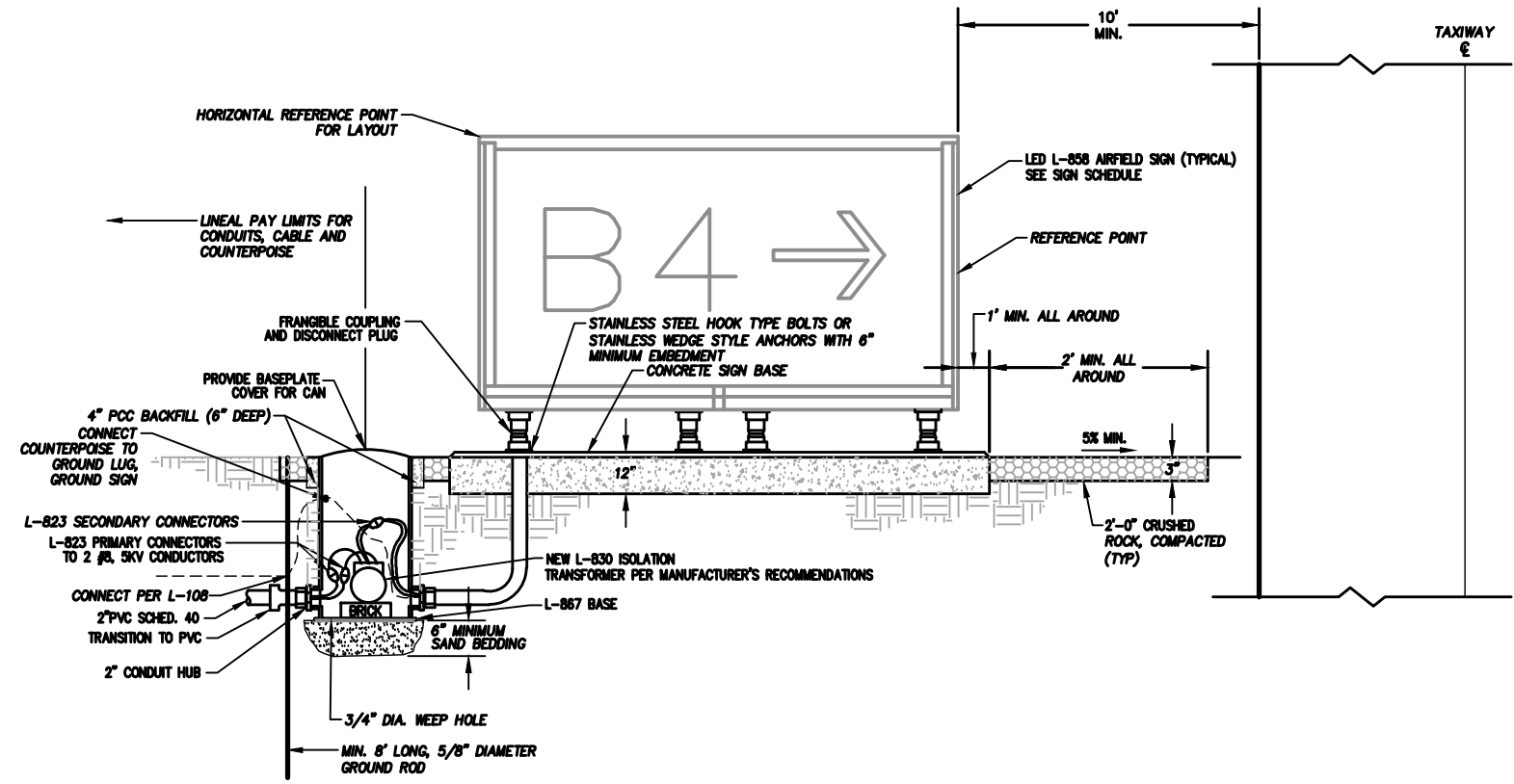
SHEET INFO	DESIGNED	DRAWN	CHECKED	APPROVED	LAST EDIT	PLOT DATE	SUBMITTAL
					6/11/2015	6/18/2015	

**ELECTRICAL DETAILS**  
SEASIDE MUNICIPAL AIRPORT  
2015 RUNWAY LIGHTING AND OTHER IMPROVEMENTS  
PROJECT NUMBER: 0005537W  
DRAWING FILE NAME: 0005537W-AIRP-EL02  
SCALE: ----



DATE: 6/18/2015 1:46 PM [ PLOTTER: DWG To PDF.pc3 ] [ STYLE: WHP-Standard.ctb ] [ PATH: P:\City of Seaside\0005537W\Design\Drawings\Civil\0005537W-AIRP-EL02.dwg ] [ LAYOUT: SIGNAGE DETAILS ]

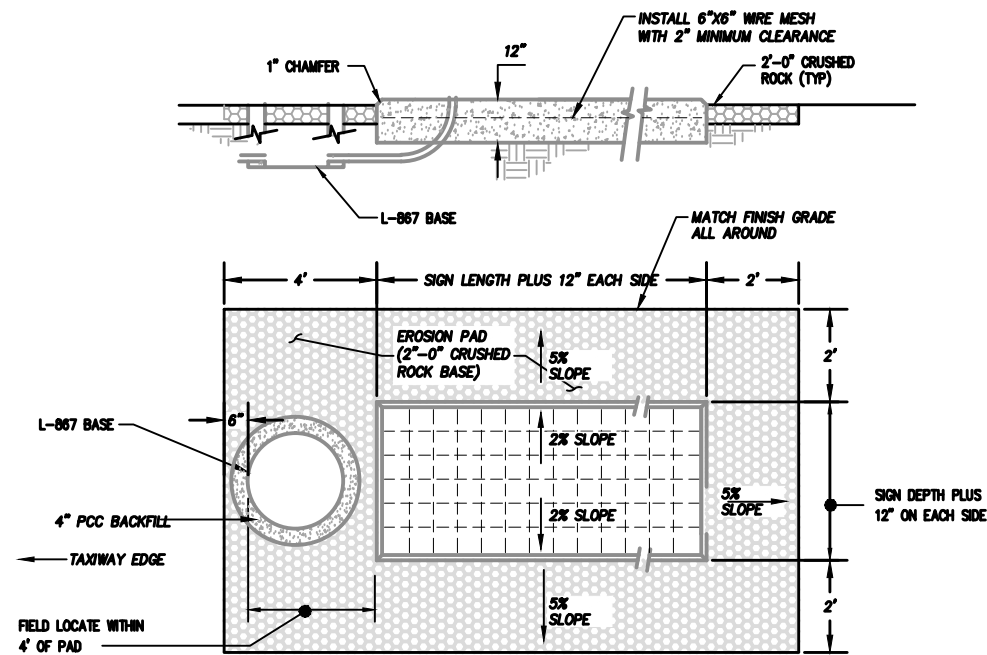
SIGN SCHEDULE						
SIGN	SIDE	SIDE OF PAVEMENT	PROPOSED SIGN LEGEND (SIGN COLOR)		REFERENCE POINT	
					NORTHING	EASTING
1	A	L	A1 (YEL ON BLK)	16 (WHT ON RED)	875544.98	7338454.63
	B	R	A1 (YEL ON BLK)			
2	A	L	A2 (YEL ON BLK)	16-34 (WHT ON RED)	874747.26	7338427.70
	B	R	A2 (YEL ON BLK)			
3	A	L	A3 (YEL ON BLK)	34 (WHT ON RED)	873245.75	7338377.03
	B	R	A3 (YEL ON BLK)			



SIGN FOUNDATION SECTION  
SCALE: N.T.S. 1  
E-7

**GENERAL NOTES:**

- FOR THE REFERENCE POINT LOCATION, SEE DETAIL 1/E-7
- SIDE FACE:**  
SIGN SIDE A = SIDE VISIBLE BY AIRCRAFT APPROACHING RUNWAY  
SIGN SIDE B = SIDE VISIBLE BY AIRCRAFT EXITING RUNWAY
- SIGN LEGEND COLORS ARE AS FOLLOWS:**  
BLK = BLACK  
RED = RED  
WHT = WHITE  
YEL = YELLOW
- SIGN SIZE, COLORS, LEGENDS, AND SUPPORTS SHALL BE IN ACCORDANCE WITH SECTION 16970.**



SIGN FOUNDATION PLAN  
SCALE: N.T.S. 2  
E-7

REVISIONS	NO.	BY	DATE	REMARKS

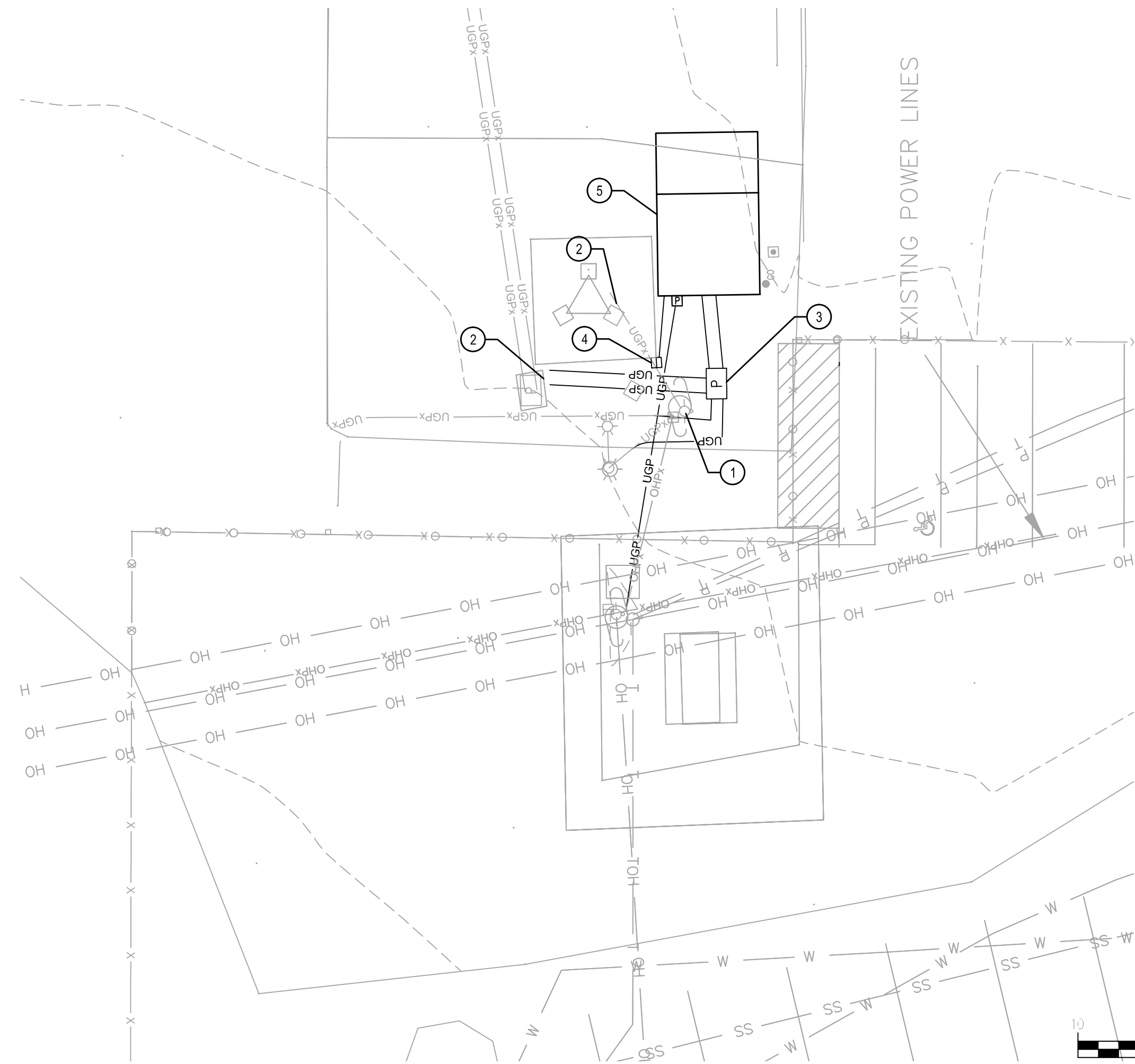
SHEET INFO	DESIGNED	DRAWN	CHECKED	APPROVED	LAST EDIT	PLOT DATE	SUBMITTAL
					6/11/2015	6/18/2015	

**SIGNAGE DETAILS**  
SEASIDE MUNICIPAL AIRPORT  
2015 RUNWAY LIGHTING AND OTHER IMPROVEMENTS  
PROJECT NUMBER 0005537W  
DRAWING FILE NAME 0005537W-AIRP-EL02  
SCALE

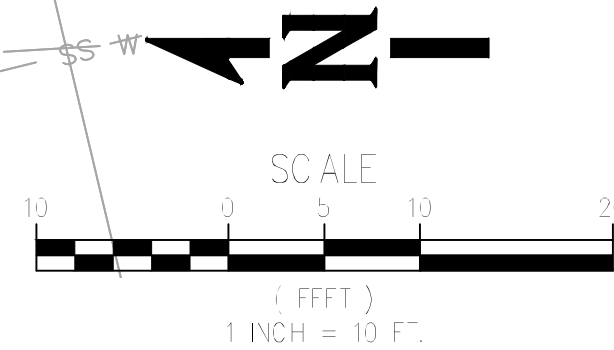
PRELIMINARY



[DATE: 6/18/2015 1:53 PM] [AUTHOR: lebert] [PLOTTER: DWG To PDF.pc3] [STYLE: WHP-Standard.ctb] [PATH: P:\City of Seaside\0005537W\Design\Drawings\Civil\0005537W-AIRP-EL03.dwg] [LAYOUT: E-5 ELECTRICAL BUILDING PLAN]



**ELECTRICAL BUILDING PLAN**  
SCALE: 1"=10'  
1  
E-8



**GENERAL NOTES:**

- CONTRACTOR TO PROVIDE PRIVATE LOCATES FOR UNDERGROUND PRIOR TO DIGGING.
- ALL ELECTRICAL WORK TO BE INSTALLED ACCORDING TO APPROPRIATE LOCAL, STATE, AND/OR FEDERAL CODE. ALL REQUIRED AND NECESSARY PERMITS TO BE OBTAINED BY THE CONTRACTOR AND CONSIDERED INCIDENTAL TO OVERALL CONTRACT.
- CONTRACTOR WILL HAVE A MAXIMUM OF 30 CALENDAR DAYS TO ENERGIZE NEW RUNWAY LIGHTING.

**KEYNOTES:**

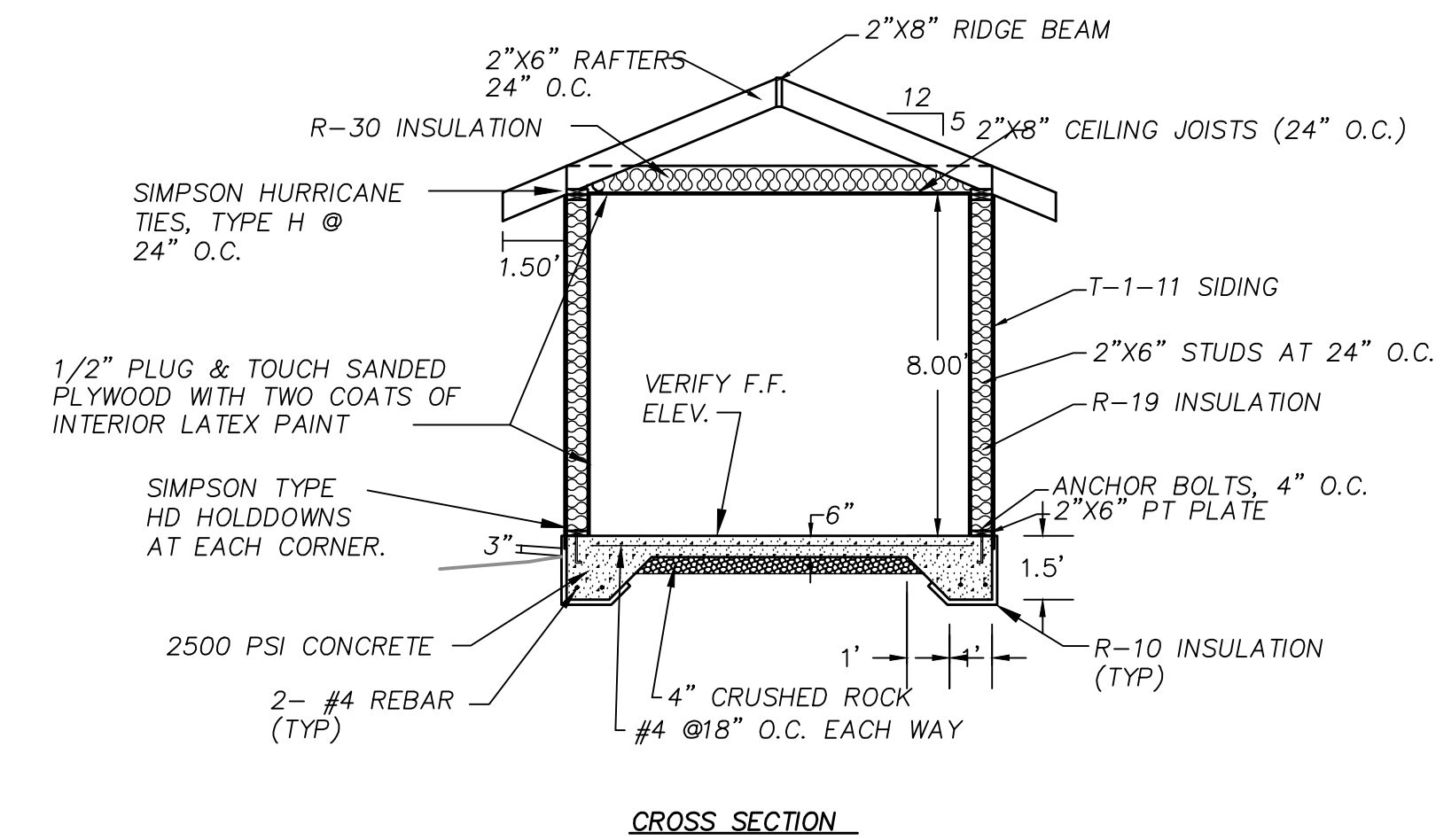
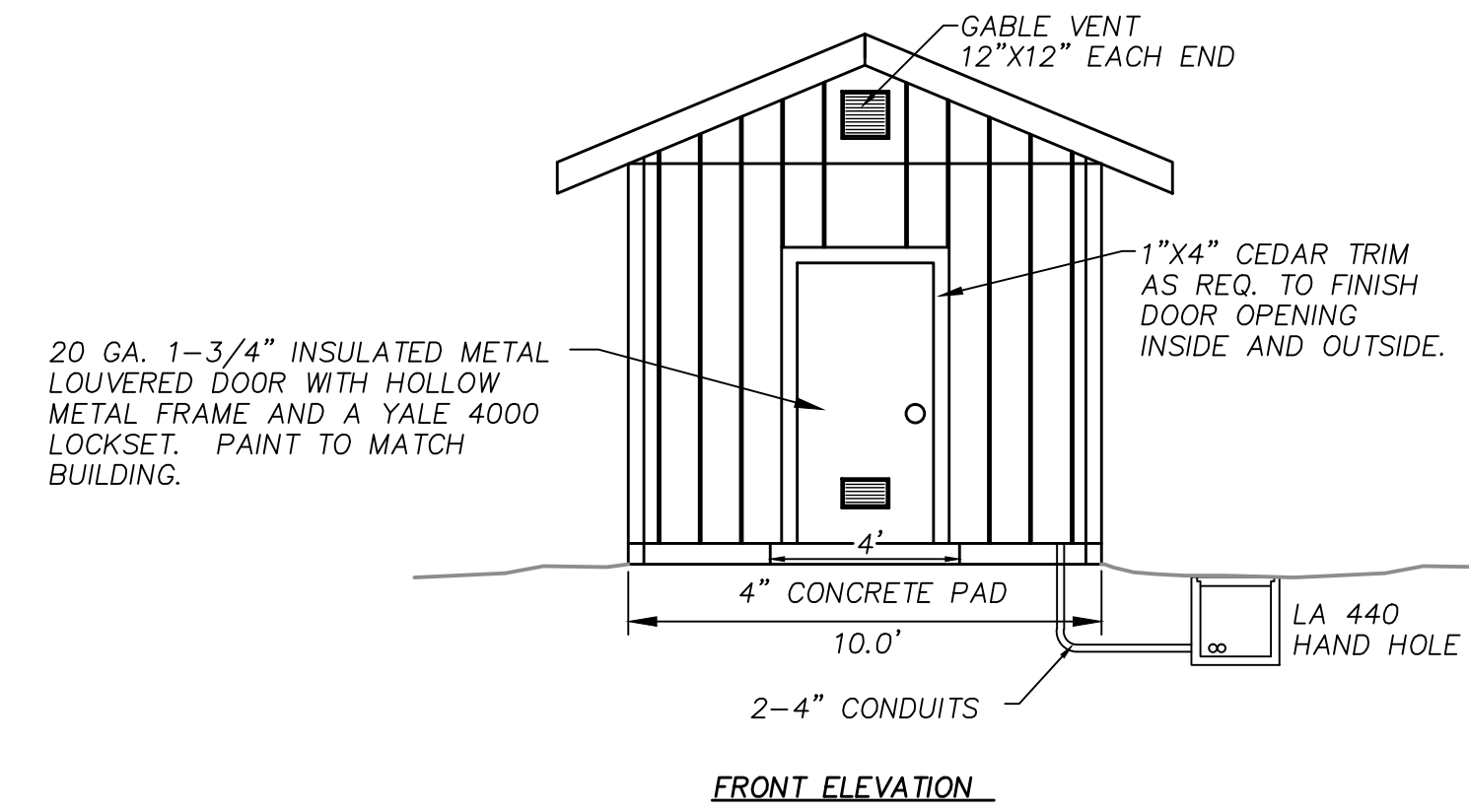
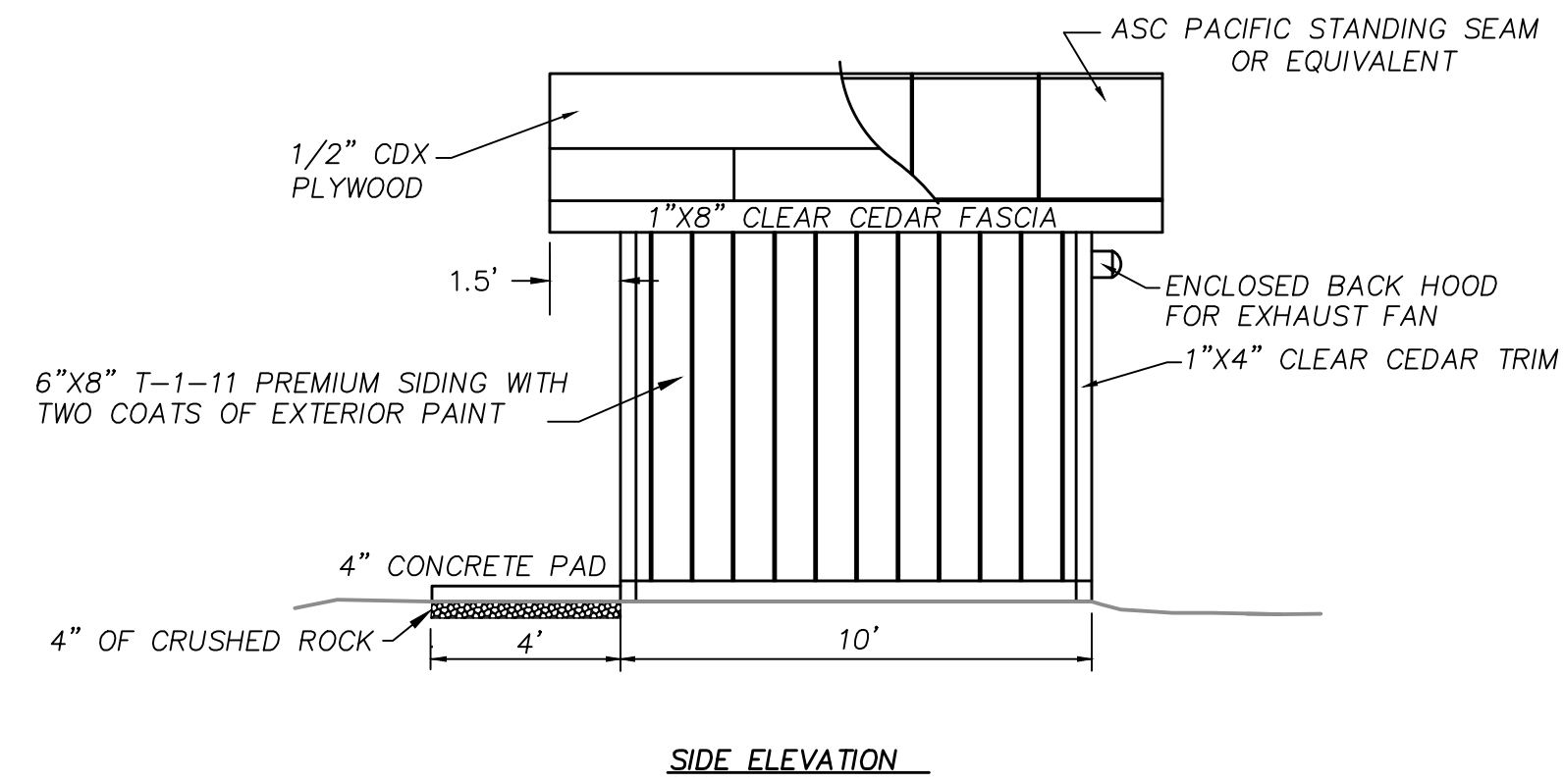
- REMOVE EXISTING POLE MOUNTED EQUIPMENT AND OTHER COMPONENTS.
- INTERCEPT EXISTING CONDUIT TO EXISTING BEACON TOWER. EXTEND CIRCUIT WITH NEW CONDUIT AND CONDUCTORS TO NEW VAULT FOR CONTINUATION TO NEW ELECTRICAL BUILDING.
- INSTALL NEW ELECTRICAL HANDHOLE PER DETAIL 4, SHEET E-6.
- INSTALL NEW JUNCTION BOX PER XX.
- CONSTRUCT NEW AIRPORT ELECTRICAL BUILDING PER 2/E-8.

**LEGEND:**

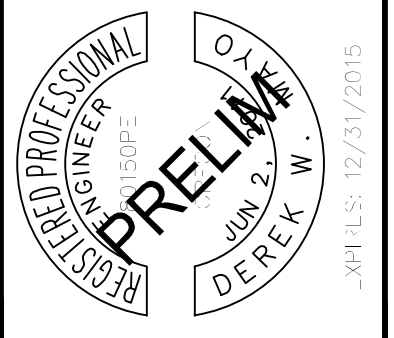
- UGP — NEW UNDERGROUND POWER
- UGPx — EXISTING POWER
- SSx — EXISTING SANITARY SEWER
- SDx — EXISTING STORM SEWER
- Tx — Tx — EXISTING TELEPHONE
- Wx — Wx — EXISTING WATERLINE
- X — X — EXISTING FENCE

**CONSTRUCTION NOTES**

- SEE SHEET E-8 FOR PLAN AND ELECTRICAL EQUIPMENT LAYOUT.
- COLOR OPTIONS FOR PAINT AND ROOFING SHALL BE SUBMITTED TO THE ENGINEER FOR SELECTION PRIOR TO BEGINNING THE BUILDING WORK. COLORS SHALL BE SELECTED BY THE CITY.
- ALL FRAMING MEMBERS TO BE #2 OR BETTER DOUGLAS FIR.
- ALL WORK TO MEET UBC CURRENT EDITION.
- CONTRACTOR TO OBTAIN ALL PERMITS. REQUIRED FOR SUCH BUILDING BY THE CITY OF SEASIDE.
- CONTRACTOR TO COORDINATE SERVICE CONNECTION AND PAY ALL ASSOCIATED CONNECTION FEES.
- PAY LIMITS FOR ELECTRICAL BUILDING SHALL INCLUDE THE BUILDING COMPLETE W/ NEW AND RELOCATED ELECTRICAL EQUIPMENT (EXCLUDING REGULATOR) INSTALLED AND APPROVED INCLUDING HAND HOLE ADJACENT TO BUILDING.



**ELECTRICAL BUILDING DETAILS**  
SCALE: N.T.S.  
2  
E-8



**WHPacific**  
0755 SW Barnes Rd, Suite 300  
Portland, OR 97225  
503.626.0450 Fax: 503.626.0775  
www.whpacific.com

REVISIONS	NO.	BY	DATE	REMARKS

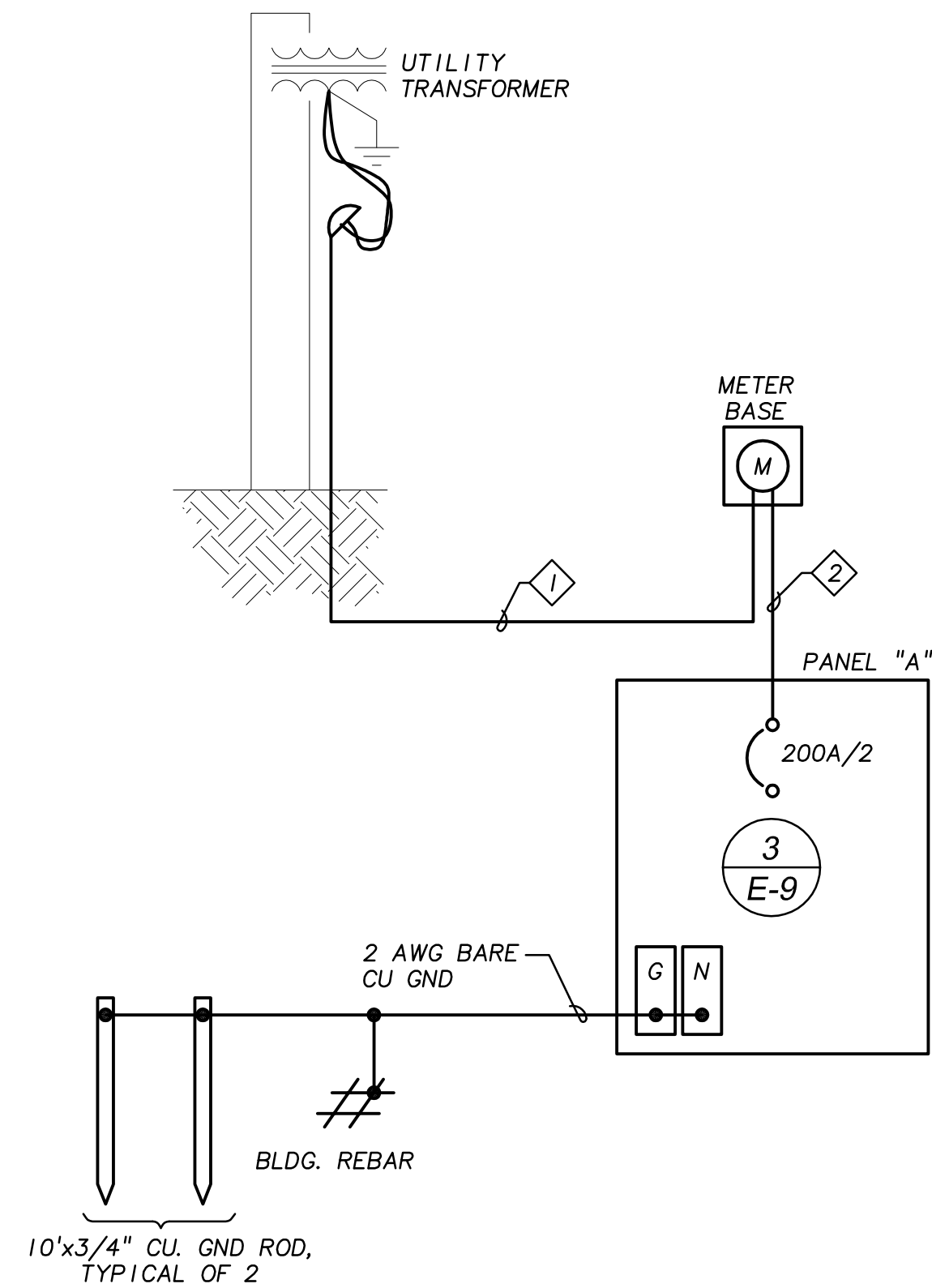
SHEET INFO	DESIGNED	DRAWN	CHECKED	APPROVED	LAST EDIT	PLOT DATE	SUBMITTAL
					6/11/2015	6/18/2015	

**ELECTRICAL BUILDING PLAN**  
SEASIDE MUNICIPAL AIRPORT  
2015 RUNWAY LIGHTING AND OTHER IMPROVEMENTS  
PROJECT NUMBER 0005537W  
DRAWING FILE NAME 0005537W-AIRP-EL03  
SCALE 1"=10'

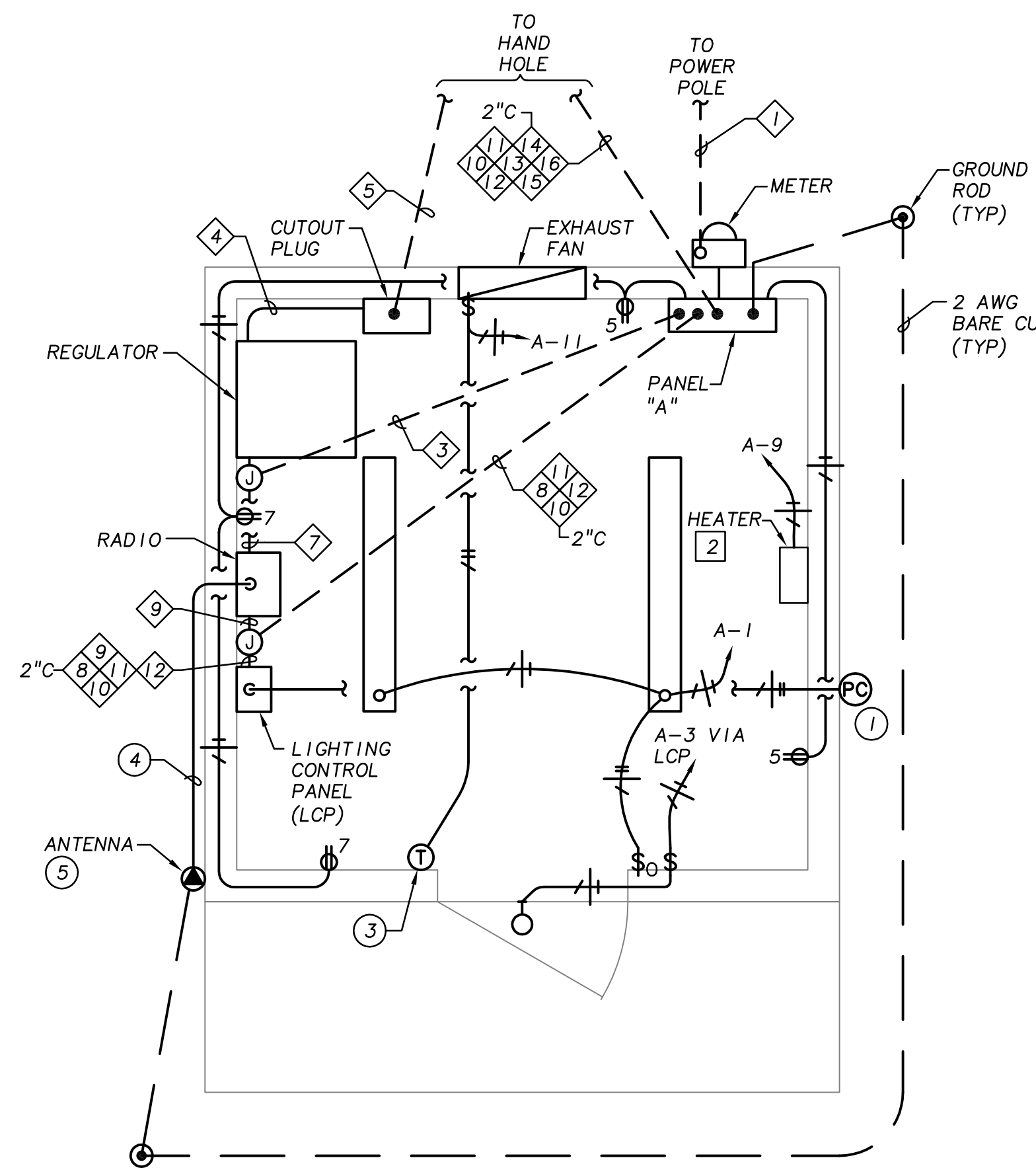
SHEET NUMBER  
**E-8**  
18 of 19

PRELIMINARY





ONE-LINE DIAGRAM  
SCALE: NONE



RUNWAY LIGHTING ELECTRICAL BUILDING PLAN  
SCALE: 1/2"=1'-0"

**GENERAL NOTES:**

- CONTRACTOR SHALL COORDINATE ALL POWER UTILITY REQUIREMENTS WITH PACIFICORP REPRESENTATIVE. PROJECT COORDINATOR IS MARILYN BROCKEY. E-MAIL: Marilyn.Brockey@pacificcorp.com.

**KEY NOTES:**

- MOUNT PHOTOCELL W/ELEMENT FACING NORTH.
- HEATER TO HAVE BUILT-IN T-STAT.
- LINE-VOLTAGE T-STAT (FOR EXHAUST FAN).
- RADIO CONTROLLER ANTENNA CABLE.
- MOUNT NEW RADIO ANTENNA PER MANUFACTURER'S RECOMMENDATION.

PANEL: A		BUS: 200A		VOLTAGE: 120/240V, 1PH, 3 WIRE						
FEEDER: SEE POWER RISER		MAIN BRKR: 200A		MOUNTING: SURFACE						
CKT NO.	CIRCUIT DESCRIPTION	CKT BREAKER POLES/AMPS	LOAD Type	Volts-Amps	PHASE	LOAD Volt-Amps	PHASE	CKT BREAKER POLES/AMPS	CIRCUIT DESCRIPTION	CKT NO.
1	LIGHTS - INTERIOR	1-20		144	A	2200		2-30	CURRENT REGULATOR	2
3	LIGHT - BLDG EXT. (VIA LCP)	1-20		28	B	2200		-	-	4
5	RECEPTS - N/W	1-20		360	A	200		1-20	RADIO & LIGHTING CONTROL PANEL	6
7	RECEPTS - S/E	1-20		360	B			1-20	SPARE	8
9	HEATER	1-20		1000	A	1080		1-20	WIND CONE (VIA LCP)	10
11	EXHAUST FAN	1-20		696	B	1365		1-20	BEACON (VIA LCP)	12
13	GATE SERVICE RECEPT	1-20		180	A	180		1-20	RECEPT AT BEACON TOWER	14
15	GATE CONTROLLER	1-20		360	B	0		1-20	SPARE	16
17	AREA LIGHT (VIA LCP)	1-20		275	A	0		1-20	SPARE	18
19	RECEPT ON POLE	1-20		180	B	0		1-20	SPARE	20
21	SPARE	1-20		0	A	0		1-20	SPARE	22
23	SPARE	1-20		0	B	0		1-20	SPARE	24
25	SPARE	1-20		0	A	0		1-20	SPARE	26
27	SPARE	1-20		0	B	0		1-20	SPARE	28
29	SPARE	1-20		0	A	0		1-20	SPARE	30
CONNECTED LOAD		TOTAL LOAD		.....NOTES.....						
LOAD PER PHASE (VA)		A=	5619	A=	6159	1.				
		B=	5189	B=	5729	2.				
LOAD PER PHASE (AMPS)		A=	46.83	A=	51.33	3.				
		B=	43.24	B=	47.75	4.				
TOTAL LOAD (KVA)		10.81		11.89		5.				
SPARE CAPACITY		10.00%		1.08		DATE 09-Jun-15				

PANEL "A" SCHEDULE  
SCALE: NONE

CONDUIT & CABLE SCHEDULE				
CKT. NUMBER	COND. SIZE	CONDUCTORS	FROM	TO
1	3"	PULL CORD PER UTILITY REQUIREMENTS	EXISTING POWER POLE #XXXXXX	METER BASE
2	2"	(3) 3/0 AWG, (1) 4 GND	METER BASE	PANELBOARD "A"
3	2"	(2) 8 AWG & (1) 10 GND	PANELBOARD "A"	4KW REGULATOR
4	2"	(2) 8 AWG, 5KV UNSHIELDED CABLE	4KW REGULATOR	CUTOUT PLUG
5	2"	(2) 8 AWG, 5KV UNSHIELDED CABLE	CUTOUT PLUG	RUNWAY LIGHTING LOOP
6		NOT USED		
7	1"	(4) 12 AWG & (1) 12 GND	RADIO CONTROLLER	4KW REGULATOR
8	2"	(8) 10 AWG & (1) 10 GND	PANELBOARD "A"	LIGHTING CONTROL PANEL
9	1"	(3) 12 AWG & (1) 12 GND	LIGHTING CONTROL PANEL	RADIO CONTROLLER
10	1"	(2) 6 AWG & (1) 6 GND	LIGHTING CONTROL PANEL	EXISTING WINDCONE
11	1"	(2) 10 AWG & (1) 10 GND	LIGHTING CONTROL PANEL	EXISTING BEACON
12	1"	(2) 12 AWG & (1) 12 GND	LIGHTING CONTROL PANEL	EXISTING AREA LIGHT
13	1"	(2) 12 AWG & (1) 12 GND	PANELBOARD "A"	EXISTING RECEPT AT BEACON TOWER
14	1"	(2) 12 AWG & (1) 12 GND	PANELBOARD "A"	EXISTING RECEPT ON AREA LIGHT POLE
15	1"	(2) 12 AWG & (1) 12 GND	PANELBOARD "A"	EXISTING GATE CONTROLLER
16	1"	(2) 12 AWG & (1) 12 GND	PANELBOARD "A"	EXISTING RECEPT AT GATE CONTROLLER
17	1"	NOT USED		
18	1"	NOT USED		

- NOTES:
- CONTRACTOR SHALL COORDINATE ALL POWER UTILITY REQUIREMENTS WITH POWER UTILITY REPRESENTATIVE PRIOR TO CONSTRUCTION.
  - CONTRACTOR SHALL REPLACE ALL EXISTING CIRCUIT CONDUCTORS WITH NEW CONDUCTORS.
  - \* INDICATED NUMBER OF CONDUCTORS AND SIZE IS APPROXIMATE. CONTRACTOR SHALL FIELD VERIFY ACTUAL CONDUCTOR COUNT AND SIZES. THE FIELD VERIFIED INFORMATION SHALL BE PROVIDED TO THE ENGINEER IN A WRITTEN DOCUMENT.

W:\WF\200\_WHPacific\028\_Seaside Airport Improvements\001\_Design\DWG\E-9.dwg Jun 16, 2015 3:57pm ROBERT

**WHPacific**  
8115 S.W. Allen Boulevard  
Bainbridge, Oregon 97005  
Phone: (503) 298-4900  
Fax: (503) 726-3258  
E-mail: whpacific@whpacific.com  
Project No.: 2001028101 Contact: JEFF HOWARD

**R&W**  
ENGINEERING, INC.  
"Engineering Integrated Solutions"  
Project No.: 2001028101

**PRELIMINARY**

REGISTERED PROFESSIONAL ENGINEER  
OREGON  
JULY 10, 1983  
JEFFREY L. GEMOCK  
EXPIRES 6/30/15

REVISIONS		DATE	REMARKS
NO.	BY		

SHEET INFO		DESIGNED	DRAWN	CHECKED	APPROVED	LAST EDIT	PLOT DATE	SUBMITTAL
JLH	RSC							
						6/9/2015	6/16/2015	

**ELECTRICAL ONE-LINE DIAGRAM**

SEASIDE MUNICIPAL AIRPORT  
2015 RUNWAY LIGHTING AND OTHER IMPROVEMENTS

PROJECT NUMBER 0005537W  
DRAWING FILE NAME E-9

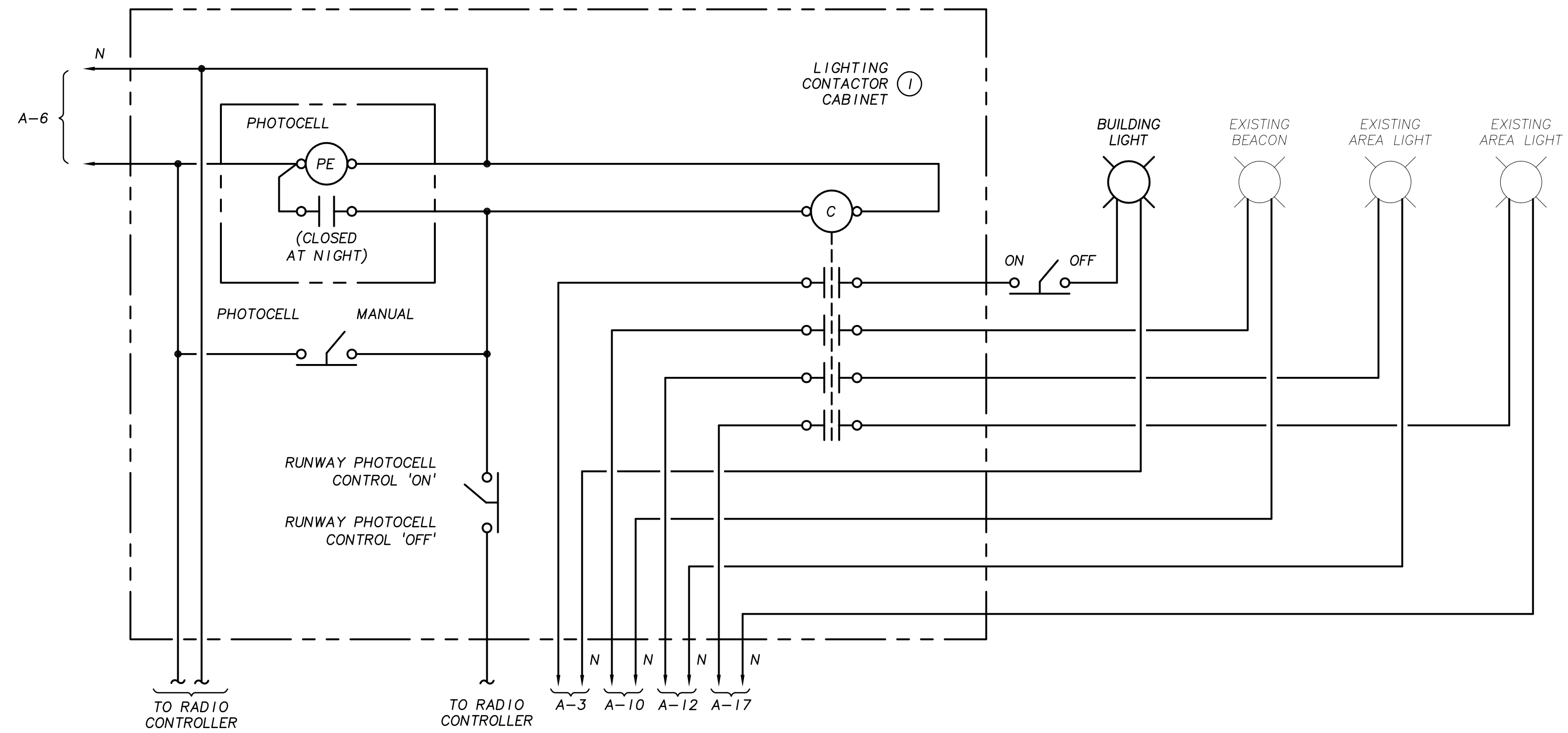
SCALE AS SHOWN

SHEET NUMBER

**F.9**  
12 OF ??

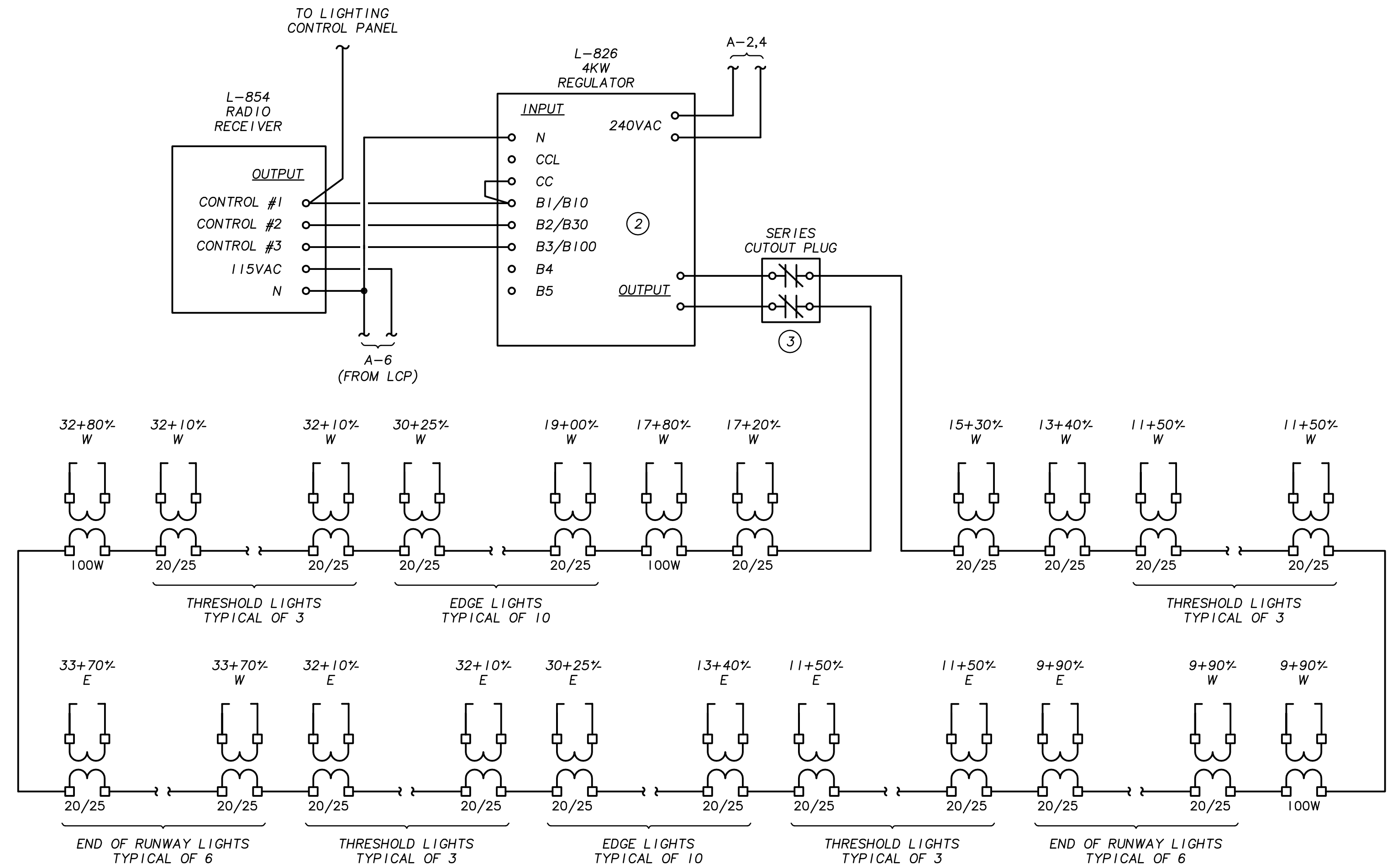






PHOTOCELL CONTROL SCHEMATIC  
SCALE: NONE

1  
E-10



RUNWAY LOOP LIGHTING DIAGRAM  
SCALE: NONE

2  
E-10

**GENERAL NOTES:**

- CONTRACTOR SHALL COORDINATE ALL POWER UTILITY REQUIREMENTS WITH PACIFICORP REPRESENTATIVE. PROJECT COORDINATOR IS MARILYN BROCKEY. E-MAIL: Marilyn.Brockey@pacifcorp.com.
- CONTRACTOR SHALL FIELD VERIFY ALL EXISTING EQUIPMENT CONNECTIONS AND CONDUCTOR SIZES PRIOR TO ANY ALTERATIONS OF EXISTING EQUIPMENT.
- CONTRACTOR SHALL TEST AND VERIFY RUNWAY LIGHTING CURRENT LOOP WITH MEG-METER TO DETERMINE LOOP INTEGRITY. THIS TEST SHALL BE WITNESSED BY THE ENGINEER AND PERFORMED PRIOR TO SUBSTANTIAL COMPLETION.
- RUNWAY LIGHTS SHALL OPERATE AS FOLLOWS:
  - RADIO CONTROL SHALL TURN RUNWAY LIGHTS ON/OFF AND ADJUST INTENSITY DURING DAY TIME.
  - RADIO CONTROL SHALL TURN RUNWAY LIGHTS ON/OFF AND ADJUST INTENSITY DURING NIGHT TIME IF PHOTOCELL CONTROL IS TURNED OFF.
  - RADIO CONTROL SHALL ADJUST RUNWAY LIGHT INTENSITY DURING NIGHT TIME IF PHOTOCELL CONTROL IS TURNED ON.

**KEY NOTES:**

- PROVIDE NEW LIGHTING CONTROL CABINET, NEMA 1 RATED.
- VERIFY REGULATOR CONTROL WIRING WITH REGULATOR MANUFACTURER PRIOR TO INSTALLATION.
- TYPE S-1 SERIES CUTO OUT PLUG.

**LEGEND**

- SERIES ISOLATION TRANSFORMER  
L830 SERIES, 6.6 AMP PRIMARY (NEW OR RELOCATED)  
- 20/25 WATT, 6.6 AMP SECONDARY  
- 100 WATT, 6.6 AMP SECONDARY
- L-861SE LED THRESHOLD LIGHTS WITH BASE CAN (NEW OR RELOCATED)
- L-861E LED RUNWAY END LIGHTS WITH BASE CAN (NEW OR RELOCATED)
- L-861 LED RUNWAY EDGE LIGHTS WITH BASE CAN (NEW OR RELOCATED)
- L-858 LED GUIDANCE SIGN (NEW)
- APPROXIMATE LOCATION: STATION 120 PLUS 50 FEET, WEST SIDE OF RUNWAY.

W:\WF\200\_WHPacific\028\_Seaside Airport Improvements\001\_Design\DWG\E-10.dwg Jun 16, 2015 -- 3:58pm ROBERT

**WHPacific**  
8115 S.W. Allen Boulevard  
Bainbridge, Oregon 97005  
Phone: (503) 296-4900  
Fax: (503) 296-3258  
E-mail: whpacific@whpacific.com  
Project No.: 2001028.001  
Contact: JEFF HODWARD

**PRELIMINARY**  
REGISTERED PROFESSIONAL ENGINEER  
18533  
OREGON  
JULY 10, 1987  
JEFFREY L. GENWICK  
EXPIRES 6/30/15

REVISIONS	NO.	BY	DATE	REMARKS

SHEET INFO	DESIGNED	DRAWN	CHECKED	APPROVED	LAST EDIT	PLOT DATE	SUBMITTAL
	JLH	RSC	JLH		6/9/2015	6/16/2015	

**ELECTRICAL ONE-LINE DIAGRAM**  
SEASIDE MUNICIPAL AIRPORT  
2015 RUNWAY LIGHTING AND OTHER IMPROVEMENTS  
SCALE AS SHOWN  
DRAWING FILE NAME E-10  
PROJECT NUMBER 0005537W





